
miniatures



HOBBY LOBBY®

LITTLE CREATIONS
BIG
PERSONALITY!



Camp Out

Sometimes it's the little things that make a scene. So set the table, stock the kitchen, and add plenty of everyday touches for a look that feels lived-in. P.S. Wood tread wheels (connected by a dowel) add a natural charm.





Go Green

Turn a readymade (and pre-dressed!) terrarium into a greenhouse. Base the design on a personal workspace—or a space that dreams are made of. **Tip:** Create wood-paneled flooring out of wainscoting for a rustic feel.

.....

Shelf Life

New to miniatures? Start with a simple, ready-to-go container—like this hexagon shelf. It's essentially a no-prep display! The shelf comes in a set of three, which is just perfect for a trio of tiny creations!

Take A Seat

Make a miniature rocking chair look authentically aged by distressing it. How? Just paint it, sand it, and that's it! And give brick dollhouse siding a whitewashed finish with a light, irregular coat of paint—it'll add a rustic realism to the scene.



Garden Variety

With a little imagination, wooden decor can become a gardener's workshop—the base is a pallet sign and the backdrop is a simple wood square.

Tip: Give the piece some natural texture with a burlap background and mossy flooring.





Green Thumb

Create custom miniatures by repurposing leftover pieces. Just look at the outdoor sink: It's a cabinet backed with a section of unused fence. Or check out the ladder shelf: Extra drawers glued to basswood sticks made it possible.



Into the Woods

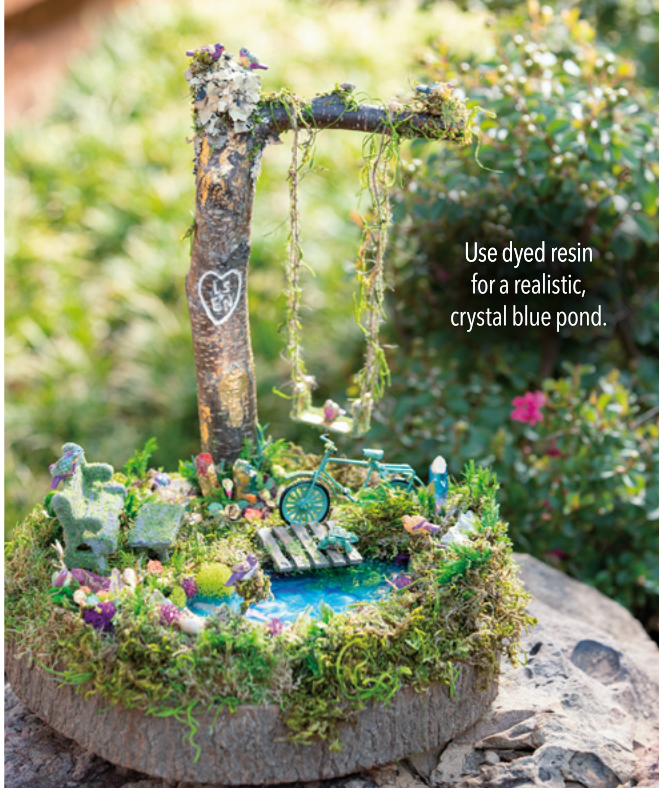
Here's a scene straight out of a fairytale! The wood slice base is a sturdy solution that'll keep the fantasy forest theme going from top to bottom.

P.S. Layers of foam board (covered in moss) allow for the recessed pond and nestled tree.

.....

Making Time

This teeny timepiece, which began as a blank wood canvas, shows miniature scenes can be both pretty and practical. Paint the clock hands and numbers, then mount the numbers on buttons for a cutesy custom look.



Use dyed resin for a realistic, crystal blue pond.



Mimic tile flooring with dollhouse wallpaper.



Moss Boss

Mimic the look of moss with this quick trick. Use decoupage medium to apply coarse turf to miniatures, and done. No really, that's it! P.S. Coarse turf comes in a powdery mix, making it easy to spread and sprinkle where needed.





Sew Be It

Don't see the piece you need? Head to the bare wood aisle! Wooden shapes are a must-have for miniature projects. Just cut, paint, and glue to create. From intricate designs (like a mini spool rack) to basic creations (like a little ruler), make it all out of wood.



Gather Around

When selecting a backdrop for a tiny scene, don't feel forced to use a box or container. Try something unconventional! Exhibit A:

A tablet stand became a kitchen wall with just a coat of paint, a DIY basswood counter and some culinary miniatures.

.....

Rare Bird

When it comes to miniatures, customization can be half the fun! Give the furniture and piano a distressed coat of paint (to match the dry-brushed birdcage) and some gold leaf accents for a glamorous vibe.



Secure an elegant roof of greenery with floral wire.



Gold Standard

Give miniatures a little glitz and glam with gold leaf detailing. This elegant embellishment adds a striking sophistication to the scene. So don't waste a golden opportunity to create something eye-catchingly beautiful!

On the cover: The body of the camper was made of foam board, but the rounded top is pine dollhouse flooring. Why does it work? The flooring naturally bends, thanks to precut slits in the wood.



Up to Date

What makes this Christmas calendar possible? The numbers (stenciled wood squares) are backed with craft magnets! Simply glue magnets to the back of the frame so the numbers can easily be changed out.



Snow Good

Want to make a Christmas scene look over-the-top authentic? Adhere readymade faux snow (it's just finely-cut foam flocking) for a wintry display.