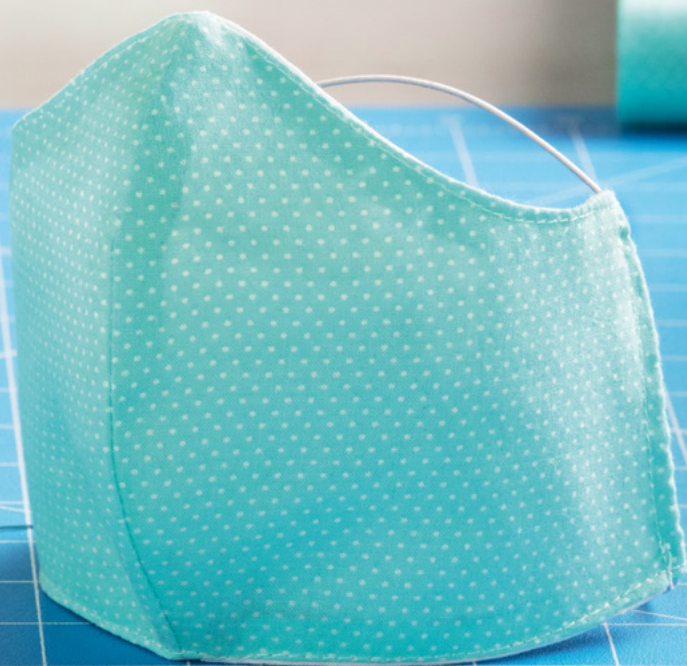


diy Cone-Style Face Mask

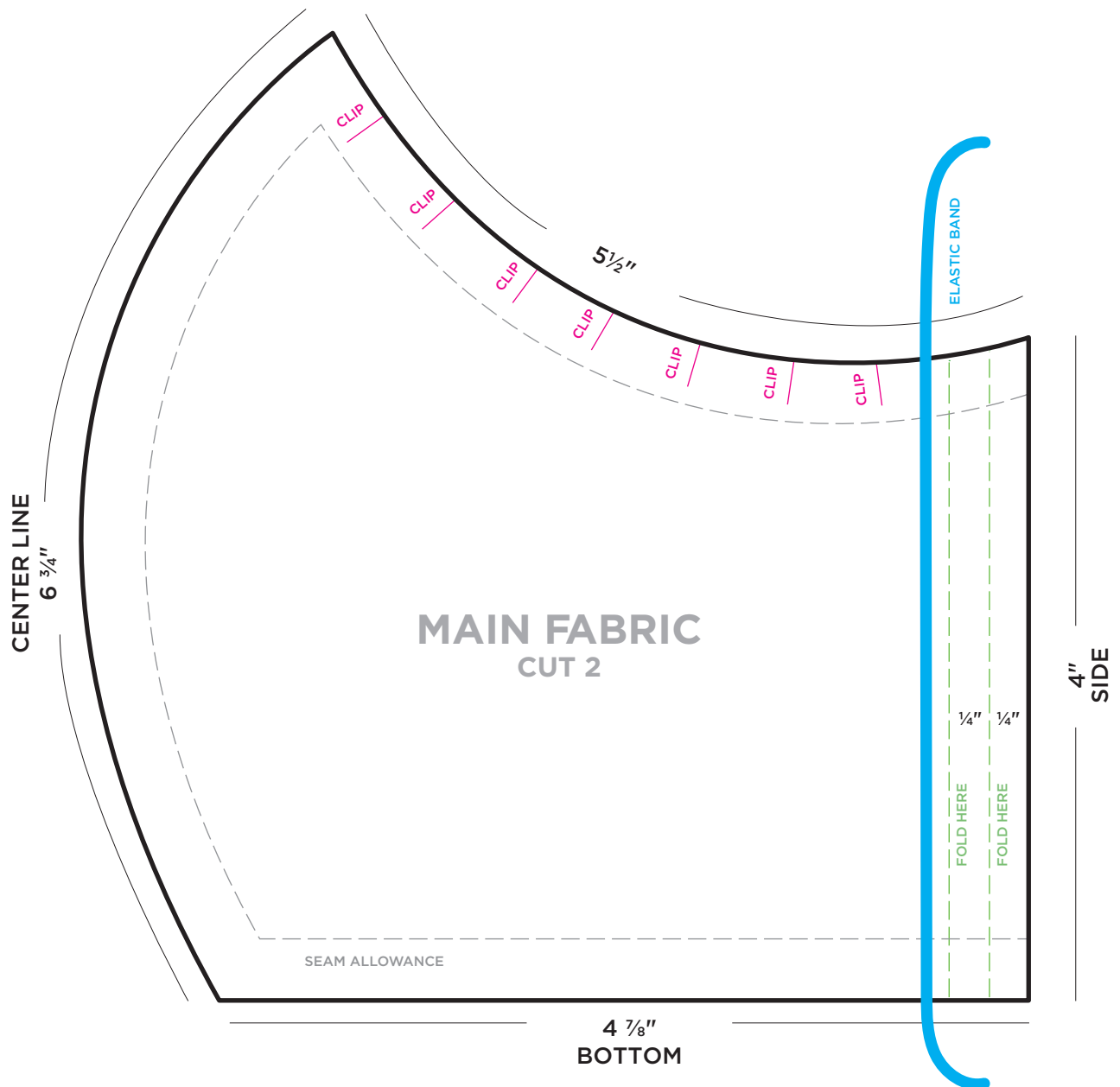


Disclaimer: This is not a medical-grade mask.

HOBBY LOBBY®

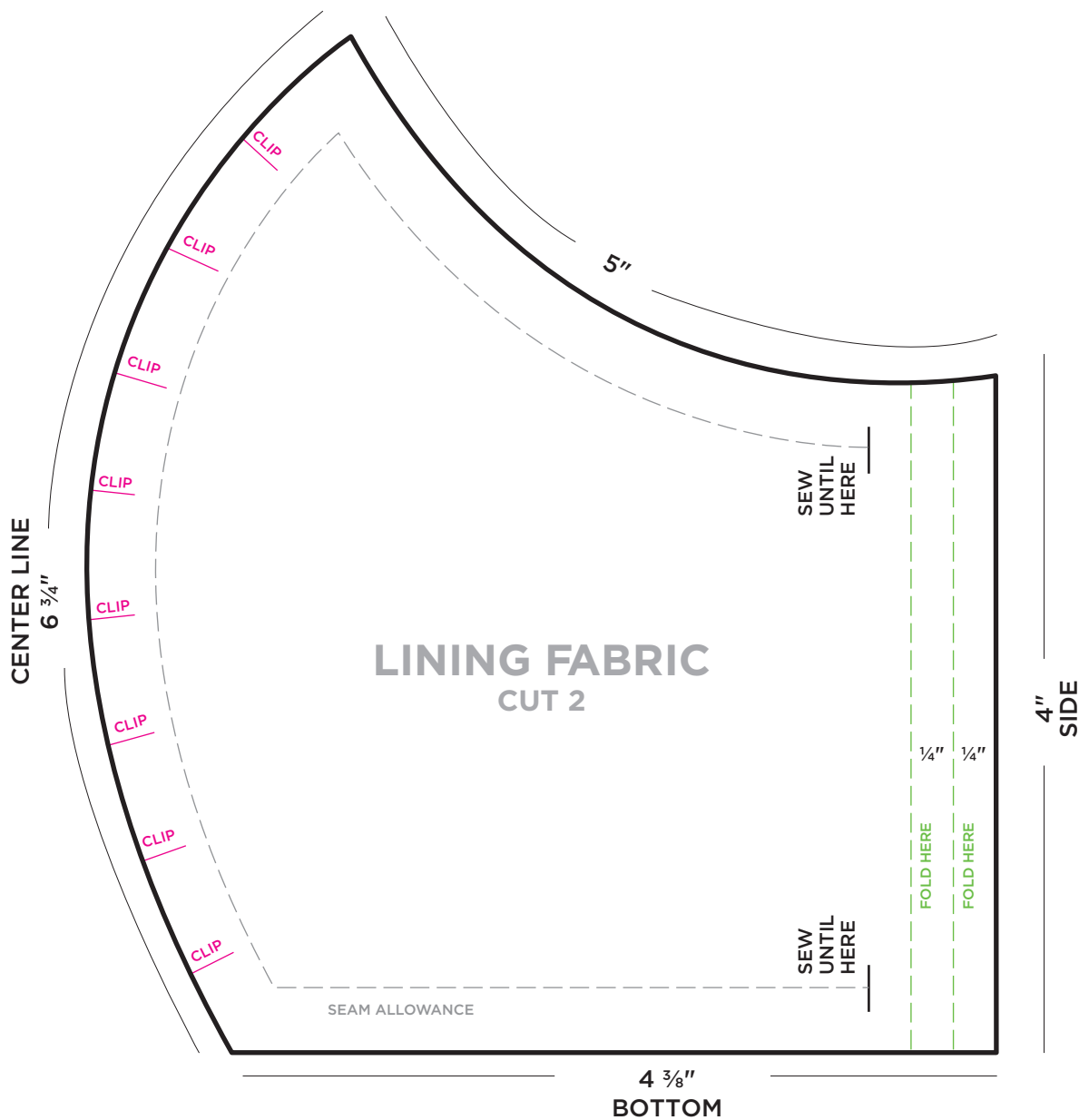
CONE-STYLE FACE MASK WITH LINING (1 of 2)

SCALED AT 100%



CONE-STYLE FACE MASK WITH LINING (2 of 2)

SCALED AT 100%



Design includes a filter pocket!



Visit [HobbyLobby.com](https://www.hobbylobby.com) for templates.

Note: We used elastic cording for our mask, but you could also try fabric ties, bias tape or any other type of cording.

SUPPLIES:

- ¼ yd. main fabric
- ¼ yd. lining fabric
- Elastic

Note: Mask is sewn with ⅛" seam allowance.

STEPS:

1. For both template pieces: Fold fabric in half, wrong sides together.
2. Trace template pieces onto fabric and cut out (you should have 2 pieces for each template).
3. Place main fabric pieces right sides together and sew center (curve).
4. Clip seam around curve and press seam open.
5. Repeat steps 3-4 for lining fabric pieces.
6. Fold one side of lining piece in ¼" twice and sew along fold. Repeat for other side.
7. Place lining piece and main fabric piece right sides together and pin in place.
8. Sew along top edges, starting and ending ¼" from each side of lining piece. Repeat for bottom edge.
9. Clip around curve of top edge. Turn piece right side out and press.
10. Turn down edges of main fabric pieces twice to line up with seam. Pin and sew across top, ⅛" from edge. Repeat for bottom.
11. To create channel for elastic, fold ends of main fabric piece in ¼" twice and sew.
12. Run 18" length of elastic cording through ends and knot to secure. Hide knot in sewn edge.
13. Place filter of choice between main fabric and lining fabric.

1-2



3-4



6



7-9



10



11



12-13

