

YARN *for the* HOLIDAYS



Nestle into
warm and
fuzzy Yarn
Creations!



HOBBY LOBBY®

STOCKING

Create a textured stocking with a crocheted bobble stitch. Finish with a DIY pompom tassel and a wood ring for easy hanging.

SKILL LEVEL: EASY

ABBREVIATIONS:

beg = beginning	rep = repeat
blo = back loop only	rnd(s) = round(s)
bobble = bobble stitch	sc = single crochet
ch = chain	sc2tog = single crochet 2 together
dc = double crochet	sk = skip
ea = each	sl st = slip stitch
hdc = half double crochet	st(s) = stitch(es)
hk = hook	tog = together
lp(s) = loop(s)	
pm = place marker	

MEASUREMENTS: Approx. 20" x 7"
(with brim folded)

MATERIALS:

- Yarn Bee® Soft and Sleek Chunky™, 5 oz (142 g) skeins of 211 yds (193 meters):
Chili Red - 2 skeins
- Yarn Bee® Soft and Sleek Chunky™, 5 oz (142 g) skein of 211 yds (193 meters):
Linen - 1 skein
- US size J-10 (6 mm) crochet hook
- Wood beads
- Wood ring
- Yarn needle
- Pompom maker

GAUGE: 16 sts and 8 rows = 4"

SPECIAL STITCHES:

Bobble stitch: *yo, insert hk into st, yo, pull up a lp, yo pull through 2 lps on hk*, rep from * 3 more times, yo, pull through all lps on hk.

Dc in third lp: the third lp is the lp directly below the regular two lps that make up a st.

INSTRUCTIONS:

Ch 2 does not count as a st. Make a magic ring.

Rnd 1: Ch 2, 12 dc into ring, sl st to join to beg st, ch 2.

Rnd 2: 2 Dc in ea st in rnd, sl st to join to beg st, ch 2.

Rnd 3: Dc in first st, 2 dc in next st, *dc in next st, 2 dc in next st, rep from * around, sl st to join to beg st, ch 2.

Rnd 4: Dc in first 2 sts, 2 dc in next st, *dc in next 2 sts, 2 dc in next st, rep from * around, sl st to join to beg st, ch 2.

Rnd 5: Dc in ea st in rnd, sl st to join to beg st, ch 1.

Rnd 6: Hdc in ea st in rnd, sl st to join to beg st, ch 2.

Rnd 7: Dc in ea st in rnd, sl st to join to beg st, ch 1.

Rnd 8: Bobble in first st, hdc in next 2 sts, *bobble in next st, hdc in next 2 sts, rep from * around, sl st to join to first bobble st, ch 2.

Rnd 9: Dc in ea st in rnd, sl st to join to beg st, ch 2.

Rnd 10: Dc in third lp of ea st in rnd, sl st to join to beg st, ch 2.

Rnds 11-19: Rep rnds 8-10.

Pm in 47th st.

HEEL:

Row 1: Dc in next 20 sts, ch 2, turn.

Rows 2-4: Dc in ea st across, ch 2, turn.

Row 5: Dc in first 4 sts, hdc in next 12 sts, dc last 4 sts, ch 1, turn.

Row 6: Hdc in first 4 sts, sc2tog 6 times, hdc in last 4 sts, ch 1.

Fold heel in half (away from stocking) and sl st top edge tog. Fold right side out. Fasten off. Join yarn at stitch marker. Work towards heel and around.

Rnd 1: Sc2tog. Work 2 scs in the end of ea dc row and sc in the end of ea hdc row. At end of heel, sc2tog. Sc in ea st in rnd, sl st to join to first st, ch 2.

Rnds 2-19: Rep rnds 8-10.

Rnd 20: Bobble in first st, hdc in next 2 sts, *bobble in next st, hdc in next 2 sts, rep from * around, sl st to join to first bobble st, ch 1.

Rnd 21: Sc in ea st in rnd, sl st to join to beg.

BRIM:

Ch 25.

Row 1: Hdc in second ch from hk and ea ch across, sl st to join to st at base of ch, sl st to join to next st, ch 1, turn.

Row 2: Sk over the 2 spaces you sl st in, hdc blo of ea st across, ch 1 turn.

Row 3: Hdc blo of ea st across, sl st in next 2 sts, ch 1, turn.

Rep rows 2-3 until you reach beg of brim. Whip stitch to join ends. Fold over.

FINISHING:

Sew wood ring onto fold of brim. Make pompom tassel and tie to ring.



CHRISTMAS GNOMES

Paper mache cones provide the structure for these knitted gnomes. Add a layer of batting to the inside of the hat and place it over the cone, bending and shaping it as needed.

Tip: To allow for shaping the tip of the hat, secure bendable wire on top of the cone.

SKILL LEVEL: INTERMEDIATE

ABBREVIATIONS:

BO = bind off
 ch = chain
 CO = cast on
 dc = double crochet
 dec = decrease
 hdc = half double crochet
 hk = hook
 k = knit
 p = purl
 rep = repeat
 sc = single crochet
 sl st = slip stitch
 st(s) = stitch(es)
 tr = treble crochet

MEASUREMENTS:

Large Gnome: Approx. 17 7/8" x 5"

Medium Gnome: Approx. 14 7/8" x 4 1/2"

Small Gnome: Approx. 11 7/8" x 4"

MATERIALS:

- Yarn Bee® Yarn ID™, 5 oz (142 g) skein of 252 yds (230 m)
 Sand Dollar (A) - 1 skein
- Yarn Bee® Rustic Romantic™, 3.5 oz (100 g) skeins of 220 yds (202 m):
 Red Roads (B) - 1 skein
 Olive (C) - 1 skein
 Antique Iron (D) - 1 skein
- Yarn Bee® Nature's Nook™, 3.5 oz (100 g) skein of 180 yds (165 m):
 Natural (E) - 1 skein
- US size 6 (4 mm) knitting needles
- Yarn needle
- Traditional batting
- Paper mache cones
- Knit counter
- Pompom maker
- Wire
- Wood ball knobs
- Faux fur
- Metal containers
- Glue
- Fabric stiffening spray

GAUGE: 10 sts and 14 rows = 2"

LARGE GNOME

INSTRUCTIONS:

LARGE GNOME BODY:

With A, CO 70 sts. Follow illustration #1a.

Row 1: K across.

Row 2: P across.

Rep rows 1-2, dec 2 sts every 6 rows, 5 times.

Rep rows 1-2, dec 2 sts every 4 rows, 5 times.
BO and sew sides together.

LARGE GNOME HAT:

With B, CO 76 sts.

Row 1: *K1, p1, rep from * across row.

Row 2: K all knit sts and p all purl sts.

Row 3-16: Rep rows 1-2. Dec 4 sts evenly spaced in last row (72 sts).

Follow illustration #2 to switch colors. Join E.

Row 17: K across row.

Row 18: P across row.

Rep rows 17-18, dec 2 sts every 6 rows, 5 times.

Rep rows 17-18, dec 2 sts every 4 rows, 12 times.

Rep rows 17-18, dec 2 sts every 2 and then 4 rows, 8 times.

Rep rows 17-18, dec 2 sts every 2 rows. BO.

FINISHING:

Sew sides together. Add a pinecone with a wood bead to the top of the hat.

SLEEVES:

Make 2 for each gnome. With body color, CO 16 sts.

Follow illustration #5 to switch colors. Join E.

Row 1-2: K across.

Row 3: P across.

Row 4-34: Rep rows 2-3, dec 2 sts every 4 and then 2 rows. BO.

FINISHING:

Sew sides of sleeve together. Cut 12" of wire and fold it in half. Wrap a piece of batting around wire and adhere. Insert into the sleeve. Glue on 1 1/4" wood ball knob to one end as a hand.

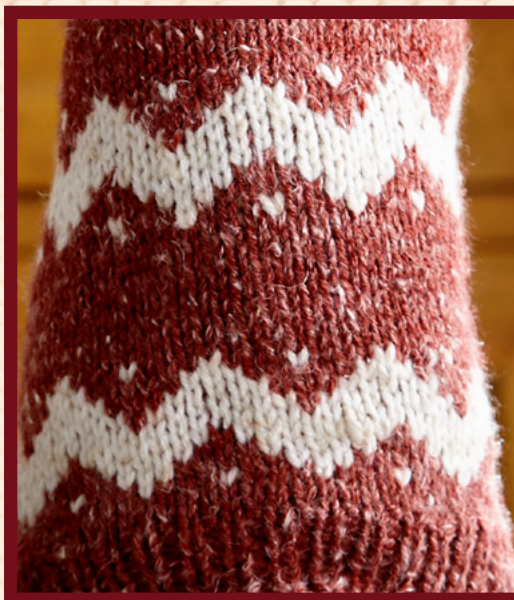
FINISHING GNOME:

Adhere bodies to bottom of paper mache cone.

Adhere 2 layers of batting to the top of cone.

Cut beard from faux fur and glue to large gnome.

Adhere 2" wood ball knob for nose. Attach sleeves to sides of body. Insert one layer of batting into large hat. Place hat over cone and secure with a few stitches.



MEDIUM GNOME

INSTRUCTIONS:

MEDIUM GNOME BODY:

With A, CO 60 sts. Follow illustration #1b.

Row 1: K across.

Row 2: P across.

Rep rows 1-2, dec 2 sts every 6 rows, 5 times.

Rep rows 1-2, dec 2 sts every 4 rows, 3 times.
BO and sew sides together.

MEDIUM GNOME HAT:

With C, CO 68 sts.

Row 1: *K1, p1, rep from * across.

Row 2: K all knit sts and p all purl sts.

Row 3-14: Rep rows 1-2. Dec 4 sts evenly spaced in last row (64 sts).

Follow illustration #3 to switch colors. Join E.

Row 15: K across.

Row 16: P across.

Rep rows 15-16, dec 2 sts every 6 rows, 2 times.

Rep rows 15-16, dec 2 sts every 4 and then 6 rows, 2 times.

Rep rows 15-16, dec 2 sts every 4 rows, 5 times.

Rep rows 15-16, dec 2 sts every 2 and then 4 rows, 2 times

Rep rows 15-16, dec 2 sts every 2 rows, 15 times. BO.

Large flower piece

Ch 3, sl st to make a ring.

Row 1: *Ch 7, sc in second ch from hk, hdc in next st, dc in next st, tr in next st, dc in next st, hdc in next st, sl st into ring, rep from * 6 times.

SMALL FLOWER PIECE:

Ch 3, sl st to make a ring.

Row 1: *Ch 5, sc in second ch from hk, hdc in next st, dc in next st, hdc in next st, sl st into ring, rep from * 6 times.

FINISHING:

Sew sides of hat together. Place small piece over large piece and sew them to the tip of the hat. Add white berry in the center of flower.

SLEEVES:

Make 2 for each gnome. With body color, CO 16 sts. Follow illustration #5 to switch colors. Join E.

Row 1-2: K across.

Row 3: P across.

Row 4-34: Rep rows 2-3, dec 2 sts every 4 and then 2 rows. BO.



FINISHING:

Sew sides of sleeve together. Cut 12" of wire and fold it in half. Wrap a piece of batting around wire and adhere. Insert into the sleeve. Glue on 1 1/4" wood ball knob to one end as a hand.

FINISHING GNOME:

Adhere body to bottom of paper mache cone. Adhere 2 layers of batting to the top of cone. Cut 6 pieces of faux fur. Create 2 braids, using 3 pieces for each. Apply fabric stiffening spray. Glue braids to gnome. Adhere 2" wood ball knob for nose. Attach sleeves to sides of body. Insert one layer of batting into medium hat. Place hat over cone, roll tip of hat to the side, and secure with a few stitches.



SMALL GNOME

INSTRUCTIONS:

SMALL GNOME BODY:

With A, CO 50 sts. Follow illustration #1c.

Row 1: K across.

Row 2: P across.

Rep rows 1-2, dec 2 sts every 6 rows, 5 times.

Rep rows 1-2, dec 2 sts every 4 rows. BO and sew sides together.

SMALL GNOME HAT:

With D, CO 60 sts.

Row 1: *K1, p1, rep from * across.

Row 2: K all knit sts and p all purl sts.

Row 3-12: Rep rows 1-2. Dec 4 sts evenly spaced in last row (56sts).

Follow illustration #4 to switch colors. Join E.

Row 13: K across.

Row 14: P across.

Rep rows 13-14, dec 2 sts every 2 and then 6 rows, 2 times.

Rep rows 13-14, dec 2 sts every 4 rows, 4 times.

Rep rows 13-14, dec 2 sts every 2 and then 4 rows, 2 times.

Rep rows 13-14, dec 2 sts every 2 rows, 14 times. BO.

FINISHING:

Sew sides together. Make pom-pom using color E. Sew pom-pom and bead onto end of hat.

SLEEVES:

Make 2 for each gnome. With body color, CO 16 sts. Follow illustration #5 to switch colors. Join E.

Row 1-2: K across.

Row 3: P across.

Row 4-34: Rep rows 2-3, dec 2 sts every 4 and then 2 rows. BO.

FINISHING:

Sew sides of sleeve together. Cut 12" of wire and fold it in half. Wrap a piece of batting around wire and adhere. Insert into the sleeve. Glue on 1 1/4" wood ball knob to one end as a hand.

FINISHING GNOME:

Adhere body to bottom of paper mache cone.

Adhere 2 layers of batting to the top of cone.

Cut 12" piece of wire and adhere to cone. Cut beard from faux fur and glue to small gnome. Adhere 1 1/2" wood ball knob for nose. Attach sleeves to sides of body. Insert one layer of batting into small hat.

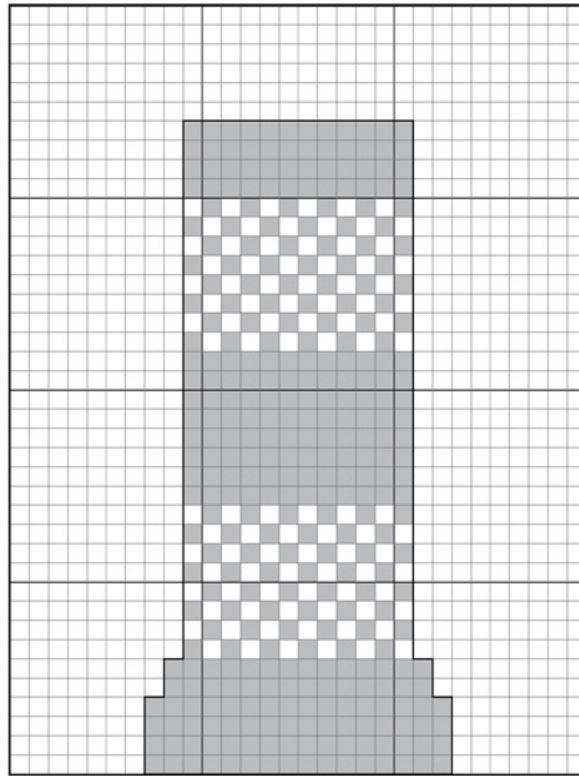
Place hat over cone, bend wire and cone into shape, and secure with a few stitches.



GNOME TEMPLATES

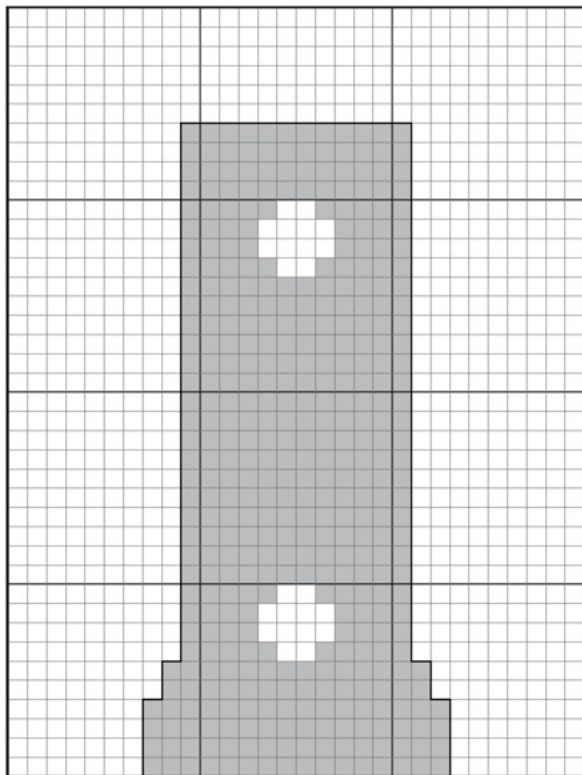
ARM

SMALL GNOME



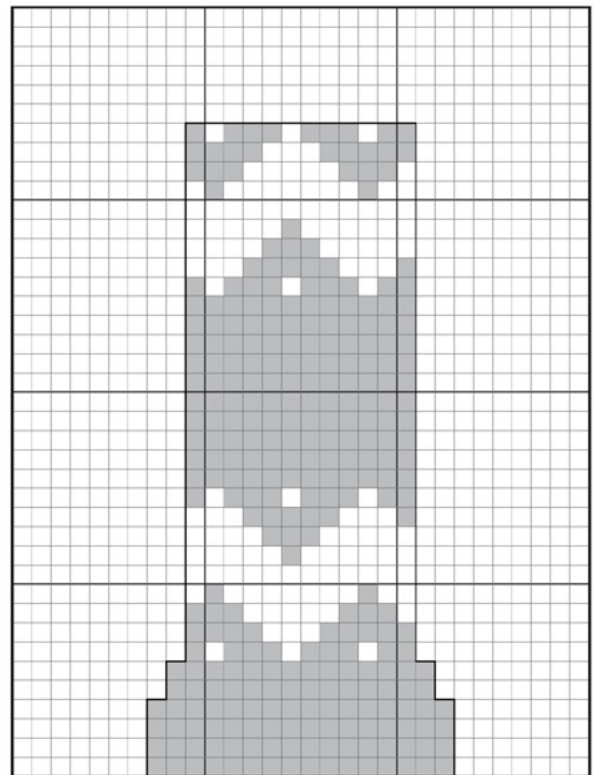
▲
WRIST

MEDIUM GNOME



▲
WRIST

LARGE GNOME

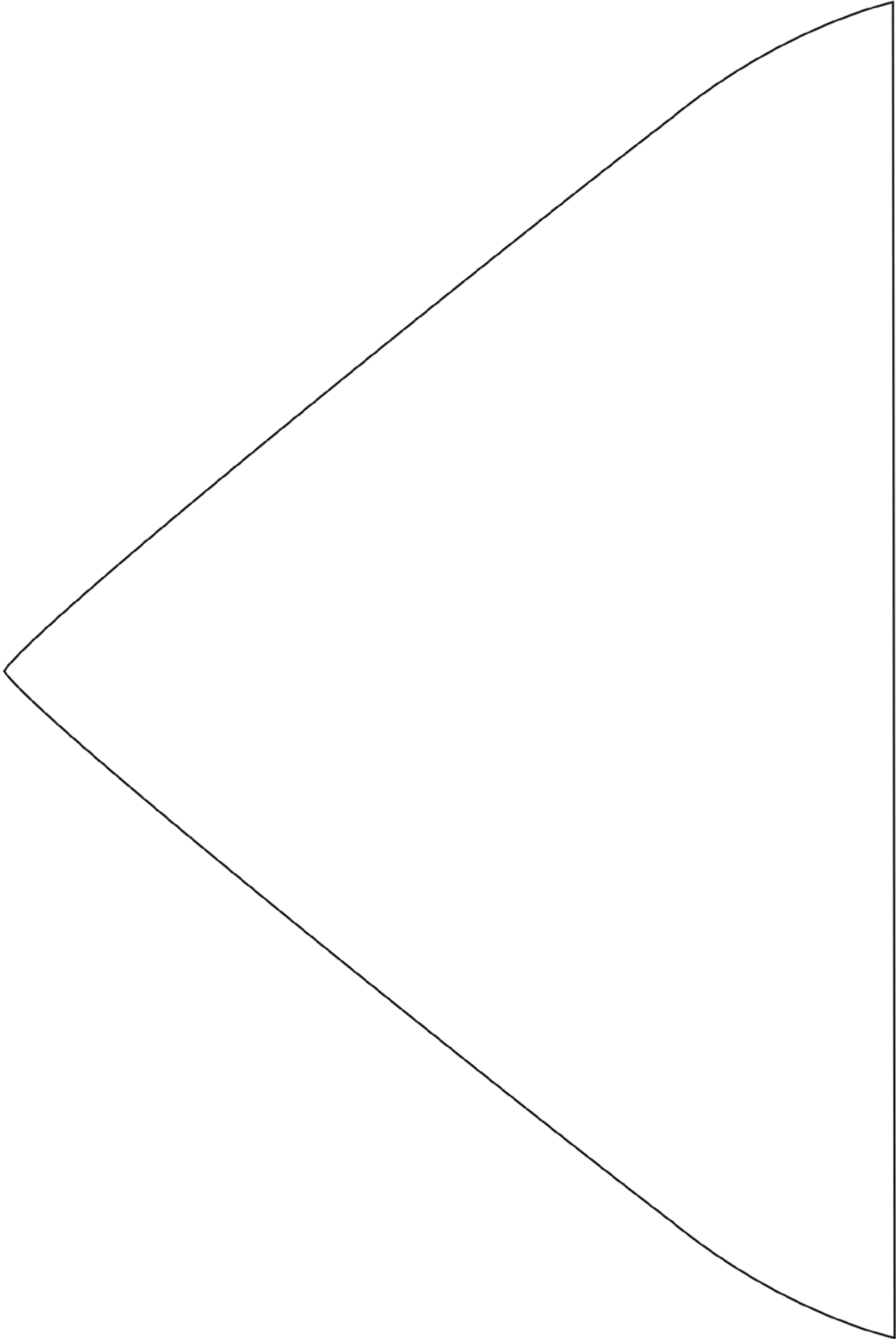


▲
WRIST

GNOME TEMPLATES

CUT OUTS

SCALED AT 100%

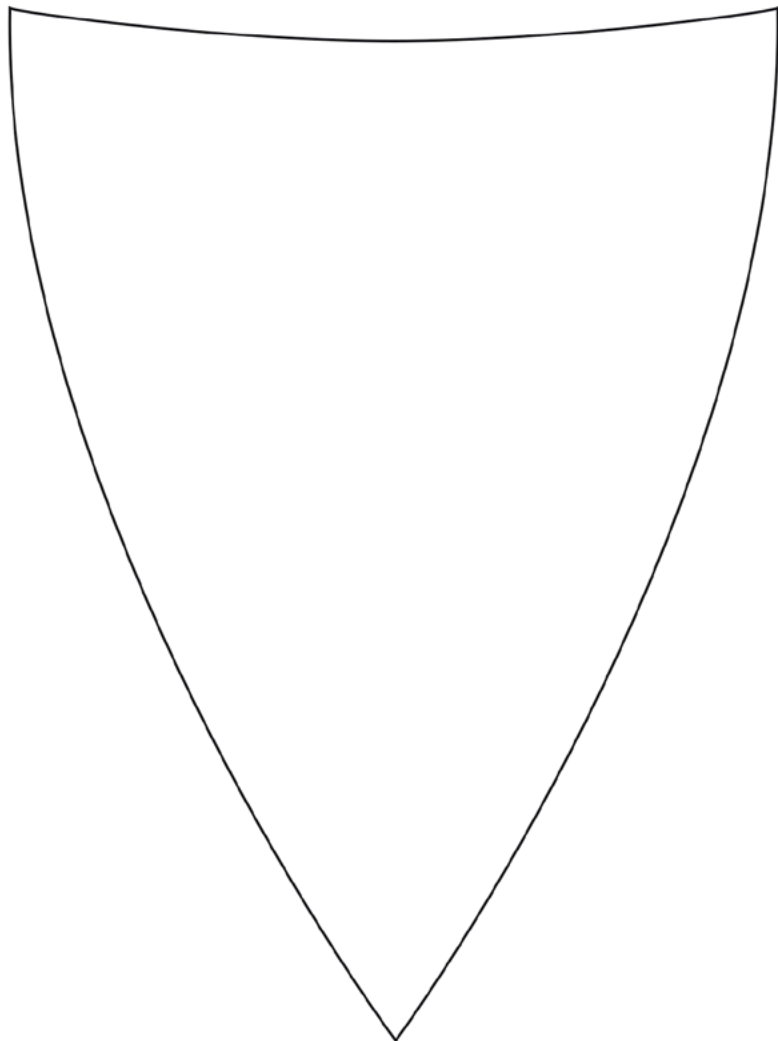


LARGE GNOME BEARD (9" x 6")
CUT 1 FUR (SKU574707)

GNOME TEMPLATES

CUT OUTS

SCALED AT 100%



SMALL GNOME BEARD
(4" x 5³/₈")

CUT 1 FUR (SKU 1937903)

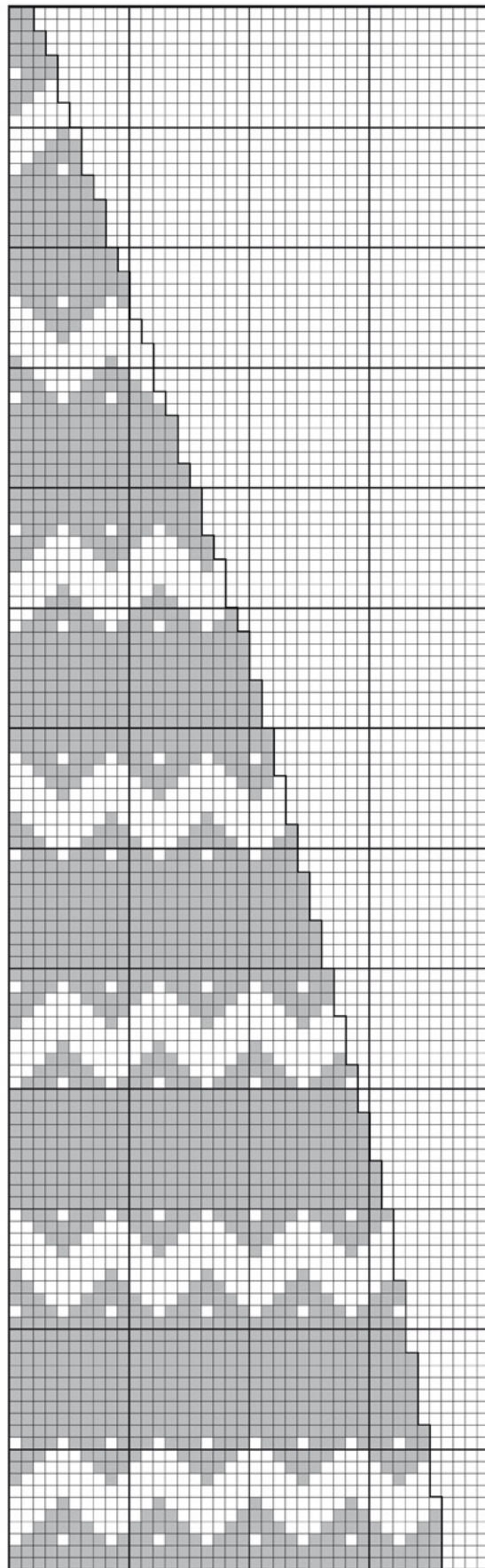


MEDIUM GNOME BRAID
(1/2" x 5")

CUT 6 (SKU 491811)

GNOME TEMPLATES

LARGE GNOME HAT

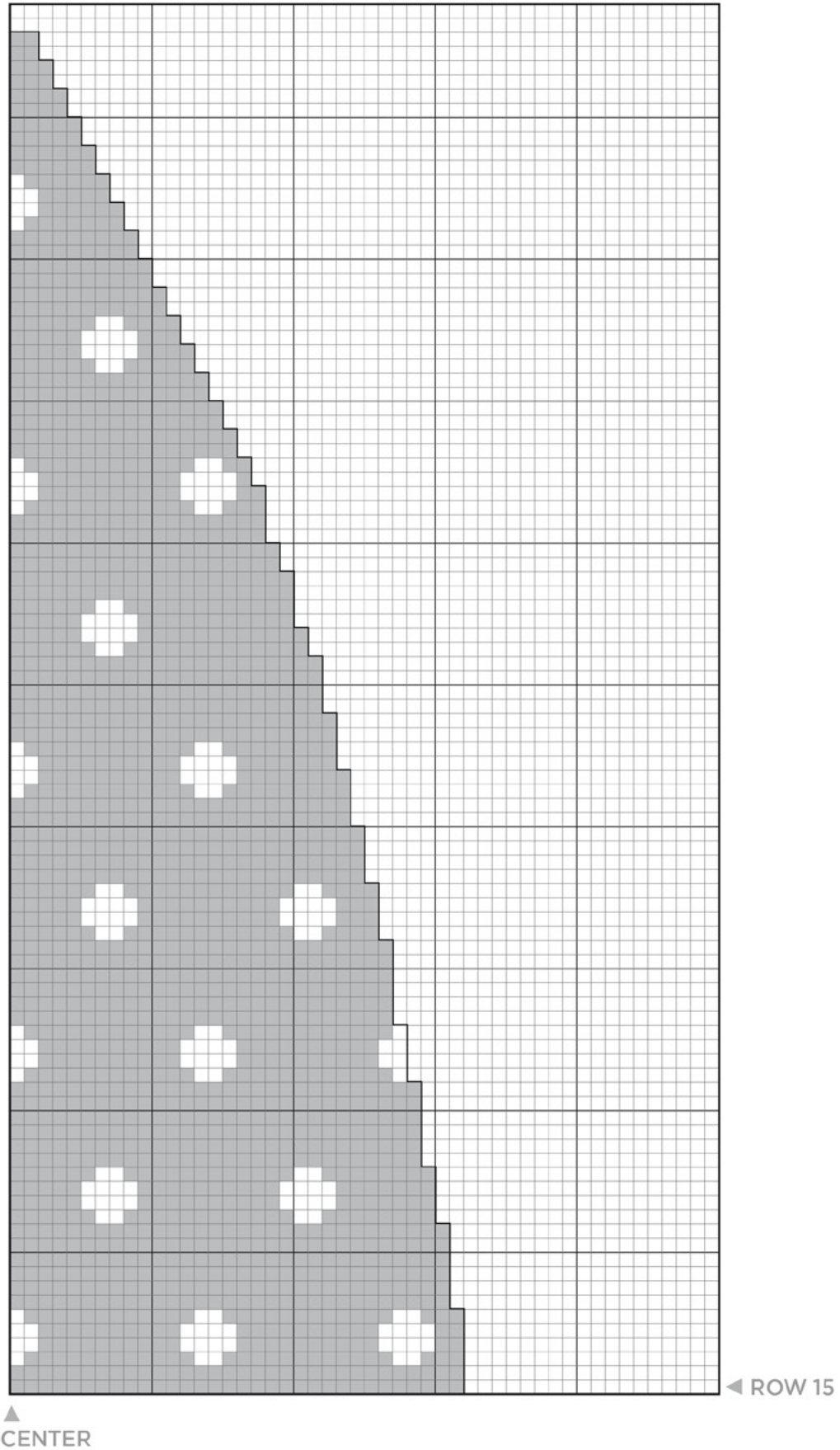


◀ ROW 17

▲
CENTER

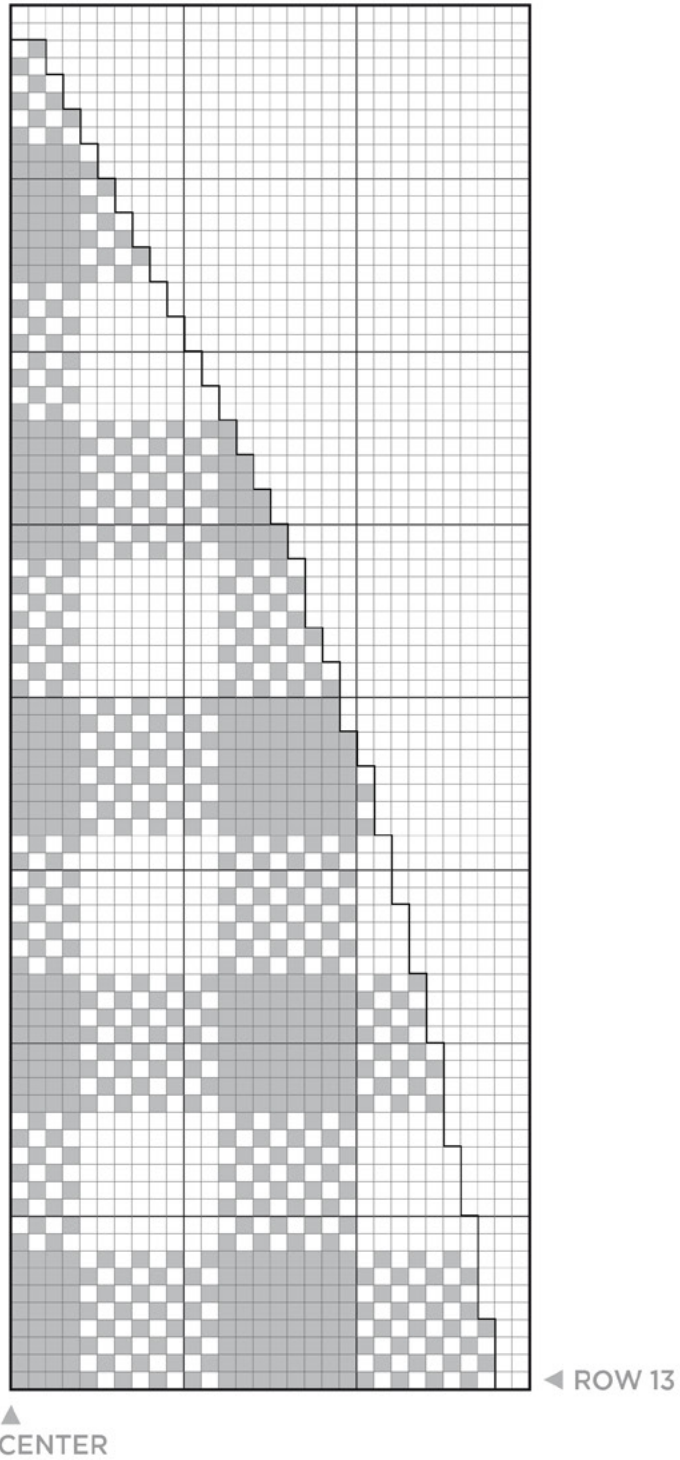
GNOME TEMPLATES

MEDIUM GNOME HAT



GNOME TEMPLATES

SMALL GNOME HAT





TREE SKIRT

This simple tree skirt pattern is a crocheted circle that's not joined on one side, allowing it to be wrapped around a Christmas tree. For the eye-catching details, crochet only in the back loop to give the skirt a ribbed texture, and then sew on pompoms and buttons.

SKILL LEVEL: EASY

ABBREVIATIONS:

ch = chain

dc = double crochet

dcblo = double crochet back loop only

ea = each

hk = hook

rep = repeat

st(s) = stitch(es)

MEASUREMENTS: Approx. 48" circle

MATERIALS:

- Yarn Bee® Effortless Super Bulky™, 6 oz (170 g) skeins of 111 yds (102 m): Eggnog - 12 skeins
- US size P/Q (15 mm) crochet hook
- Yarn needle
- Pompom maker

GAUGE: 6 sts and 3 rows = 4"

INSTRUCTIONS:

With 2 strands of yarn, ch 24.

Row 1: Dc in third ch from hk and ea ch across, ch 2, turn.

Row 2: Dcbln in first st, 2 dcbln in next st, *dcbln in next st, 2 dcbln in next st, rep from * across, ch 2, turn.

Row 3: Dc in first 2 sts, 2 dc in next st, *dc in next 2 sts, 2 dc in next st, rep from * across, ch 2, turn.

Row 4: Dcbln in first 3 sts, 2 dcbln in next st, *dcbln in next 3 sts, 2 dcbln in next st, rep from * across, ch 2, turn.

Row 5: Dc in first 4 sts, 2 dc in next st, *dc in next 4 sts, 2 dc in next st, rep from * across, ch 2, turn.

Row 6: Dcbln in first 5 sts, 2 dcbln in next st, *dcbln in next 5 sts, 2 dcbln in next st, rep from * across, ch 2, turn.

Row 7: Dc in first 6 sts, 2 dc in next st, *dc in next 6 sts, 2 dc in next st, rep from * across, ch 2, turn.

Row 8: Dcbln in first 7 sts, 2 dcbln in next st, *dcbln in next 7 sts, 2 dcbln in next st, rep from * across, ch 2, turn.

Row 9: Dc in first 8 sts, 2 dc in next st, *dc in next 8 sts, 2 dc in next st, rep from * across, ch 2, turn.

Row 10: Dcbln in first 9 sts, 2 dcbln in next st, *dcbln in next 9 sts, 2 dcbln in next st, rep from * across, ch 2, turn.

Row 11: Dc in first 10 sts, 2 dc in next st, *dc in next 10 sts, 2 dc in next st, rep from * across, ch 2, turn.

Row 12: Dcbln in first 11 sts, 2 dcbln in next st, *dcbln in next 11 sts, 2 dcbln in next st, rep from * across, ch 2, turn.

Row 13: Dc in first 12 sts, 2 dc in next st, *dc in next 12 sts, 2 dc in next st, rep from * across, ch 2, turn.

Row 14: Dcbln in first 13 sts, 2 dcbln in next st, *dcbln in next 13 sts, 2 dcbln in next st, rep from * across, ch 2, turn.

Row 15: Dc in first 14 sts, 2 dc in next st, *dc in next 14 sts, 2 dc in next st, rep from * across, ch 2, turn.

Row 16: Dcbln in first 15 sts, 2 dcbln in next st, *dcbln in next 15 sts, 2 dcbln in next st, rep from * across, ch 1, turn to inside opening edge of skirt. 2 Sc in the end of ea row, 2 sc in the corner of the inner circle, sc in ea st of inner circle, 2 sc in corner and 2 sc in the end of ea row at other side of opening edge. Fasten off. Weave in ends.

FINISHING:

Sew buttons evenly down one edge of skirt opening. Use pompom maker to make 11 pompoms (approx. 4" wide). Sew pompoms evenly around outer edge of skirt.



CROCHET STAR

When crocheting this star-shaped tree topper, alternate colors for each triangular panel, sew them together, and stuff. To make the base, wrap yarn around a paper mache cone and glue it down. Then insert a dowel rod through the top of the cone and star.

SKILL LEVEL: EASY

ABBREVIATIONS:

beg = beginning
 ch = chain
 ea = each
 hk = hook
 rem = remaining
 rep = repeat
 sc = single crochet
 sk = skip
 sl st = slip stitch
 st(s) = stitch(es)

MEASUREMENTS: Approx. 12" x 12"

MATERIALS:

- Yarn Bee Soft & Sleek Chunky Yarn, 5 oz (142 g) skeins of 211 yds (192 m) Ivory (A) -1 skein
 Linen (B) -1 skein
- US Size 7 (4.5mm) crochet hook
- Polyester fiberfill

GAUGE: 20 sts and 5 rows = 5"

INSTRUCTIONS:

TRIANGLE:

Make 10 with A and 10 with B.

Ch 26.

Row 1: Sc in second ch from hk and ea ch across, ch 1, turn.

Row 2: Sk 2 sts, sc in next 21 sts, sc2tog, ch 1, turn.

Row 3: Sk st, sc in next 19 sts, sc2tog, ch 1, turn.

Row 4: Sk 2 sts, sc in next 16 sts, sc2tog, ch 1, turn.

Row 5: Sk st, sc in next 14 sts, sc2tog, ch 1, turn.

Row 6: Sk 2 sts, sc in next 11 sts, sc2tog, ch 1, turn.

Row 7: Sk st, sc in next 9 sts, sc2tog, ch 1, turn.

Row 8: Sk 2 sts, sc in next 6 sts, sc2tog, ch 1, turn.

Row 9: Sk 2 sts, sc in next 3 sts, sc2tog, ch 1, turn.

Row 10: Sk 2 sts, sc2tog, ch 1, turn.

Row 11: Sk st, sc in next st, weave in.

CIRCLE:

Make 2.

With A, ch 5, sl st to join to beg to make a ring.

Row 1: 10 Sc in ring, sl st to join to beg.

Row 2: 2 Sc in ea st, sl st to join to beg.

Weave in all ends.

FINISHING:

If needed, dry block all triangles so they are flattened to the same size. Position triangles to form two stars (triangles should be in ABA order with wrong sides facing right sides). Sew triangle A to triangle B on longest side to form a diamond. Rep with rem pairs of triangles. Sew five pairs of diamonds together along sides to make one side of the star. Rep for other side. Place circles in center of stars to fill in gap. Sew around to attach to star points. Sew front and back of star together and stuff.



FALL LOVE PILLOW

A little hint about these autumn-ready pillows: the front of the "Fall Love" pillow is a rectangular pattern knit on straight needles, while the checkerboard pattern is worked in the round on circular knitting needles.

SKILL LEVEL: EASY

ABBREVIATIONS:

BO = bind off

CO = cast on

k = knit

p = purl

st(s) = stitches

rep = repeat

MEASUREMENTS: Approx. 12" x 22"

MATERIALS:

- Yarn Bee® True Colors™, 5 oz (142 g) skeins of 76 yds (69.5 m)
Ivory (A) - 1 skein
Rustic Rouge (B) - 1 skein
Pumpkin (C) - 1 skein
September Sage (D) - 1 skein
- US Size 11 (8mm) straight knitting needles
- Upholstery fabric
- 12" x 22" pillow insert

GAUGE: 12 sts and 16 rows = 4"

INSTRUCTIONS:

With A, CO 38 sts.

Row 1: P across row.

Row 2: K across row.

Row 3-10: Rep rows 1-2.

Join B, following illustration #1 to switch colors.

Row 11-50: Rep rows 1-2.

Join C

Row 51-54: Rep rows 1-2.

Join D

Row 55-88: Rep rows 1-2.

BO.

FINISHING:

Cut 12" x 22" rectangle of upholstery fabric. With right sides together, pin knit piece to fabric. Sew along top and sides. Turn and fit over the pillow insert. Hand sew bottom of pillow cover closed using a ladder stitch.



FALL CHECKERED PILLOW

SKILL LEVEL: EASY

ABBREVIATIONS:

BO = bind off

CO = cast on

k = knit

p = purl

pm = place marker

rep = repeat

rnd(s) = round(s)

st(s) = stitch(es)

MEASUREMENTS: Approx. 18" x 18"

MATERIALS:

- Yarn Bee Simply Sherpa, 8 oz (227 g) skeins of 48 yds (44 m):
Beige (A) - 1 skein
Powderedumber (B) - 1 skein
Olive (C) - 1 skein
- US Size 17 (12mm) circular knitting needles
- Stitch marker
- Darning needle
- Ecru embroidery floss
- 18" x 18" pillow insert

GAUGE: 6 sts and 6 rows = 4"

INSTRUCTIONS:

With A, CO 54 sts, pm. Join B, following illustration #2 to switch colors.

Rnd 1: *K3, p3 repeat from * across rnd.

Rnd 2-3: Rep rnd 1.

Join C.

Rnd 4: k across rnd.

Rnd 5-6: *P3, k3 repeat from * across rnd.

Rnd 7: Rep rnd 4.

Rnd 8-9: Rep rnd 1.

Rnd 10-27: Rep rnds 4-9.

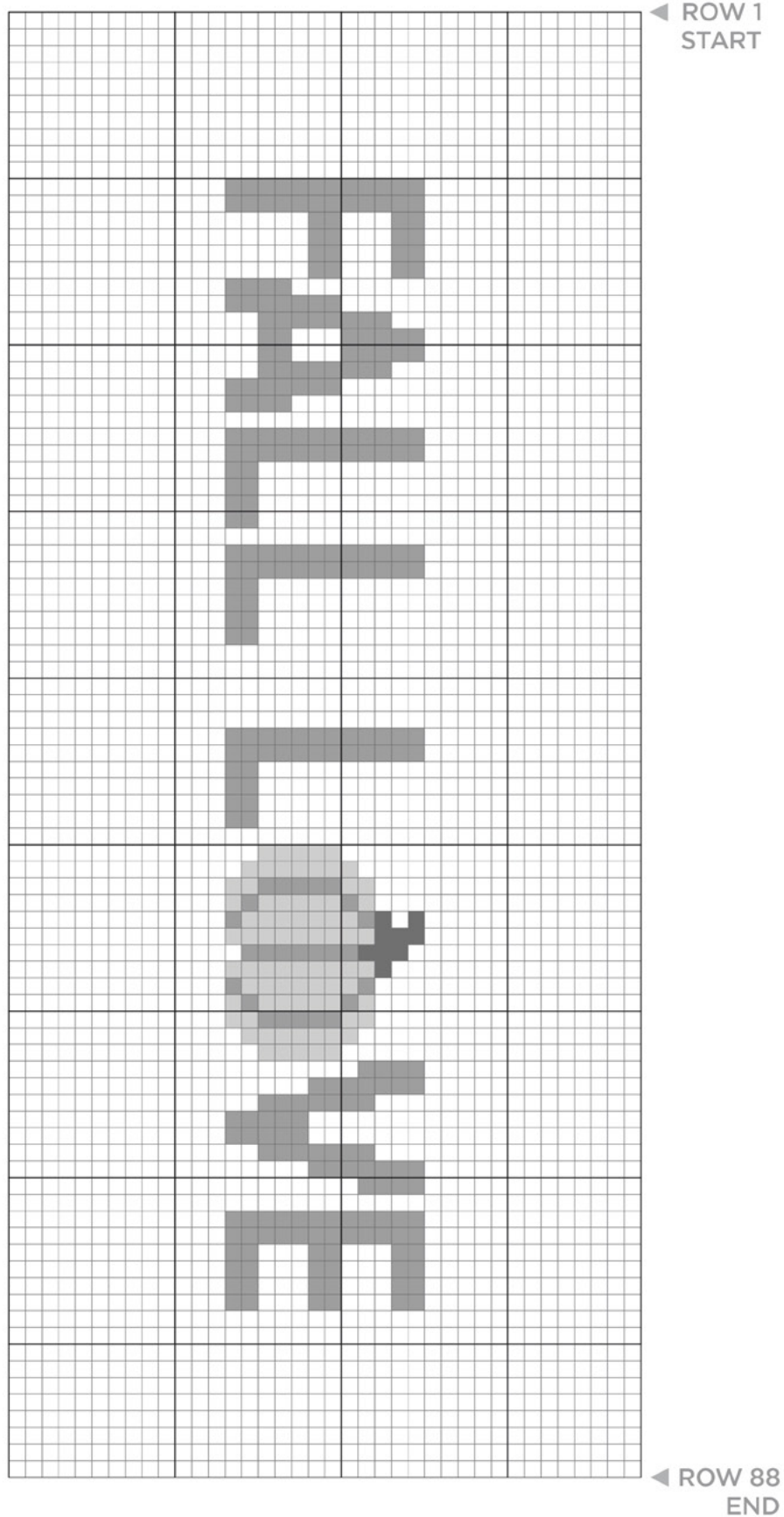
BO.

FINISHING: Sew one end of pillow cover closed.

Pull knit piece over pillow insert. Sew other end closed.

FALL PILLOWS

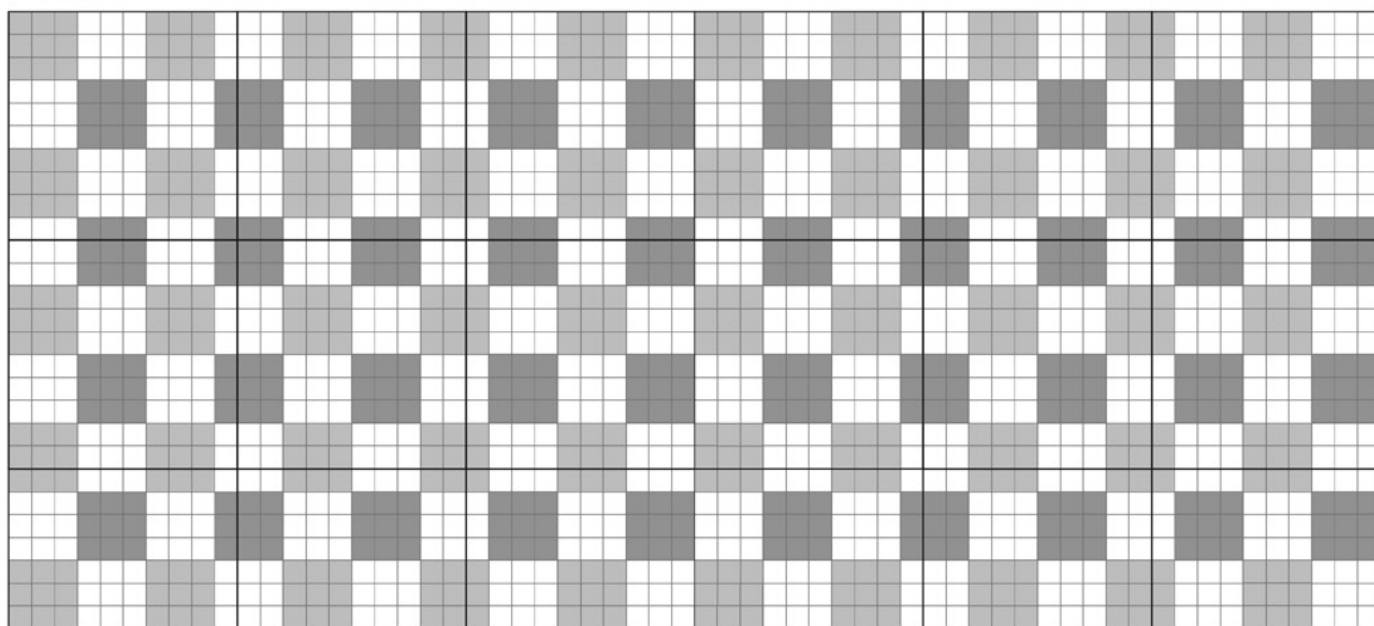
FALL LOVE KNIT PILLOW



FALL PILLOWS

FALL CHECKERED KNIT PILLOW

▼ ROUND 27
END



ROUND 1 ▲
START



ROPED OFF

These cozy garlands are an easy DIY—no needles or hooks required. Just twist, braid or finger knit doubled-up strands of yarn to make varied textures that can be mixed and matched on the mantel.

MARVELOUS MINIS

These mini hat and mitten ornaments are an ideal beginner's project—and they're a great way to put scrap yarn to good use. Since the patterns are so quick to crochet, they're a go-to for crafting last-minute presents that still have a homemade touch.



ROSY MINI MITTENS

SKILL LEVEL: EASY

ABBREVIATIONS:

ch = chain
ea = each
hk = hook
rem = remaining
rnd(s) = round(s)
sc = single crochet
sc2tog = single crochet two stitches together
sc3tog = single crochet three stitches together
sl st = slip stitch
st(s) = stitch(es)
tog = together

MEASUREMENTS: Approx. 2" x 2"

MATERIALS:

- Yarn Bee® Soft & Sleek Chunky™, 5 oz (142 g) skein of 232yds (212 m)
Ivory (A) – 1 skein
- I Love This Cotton Yarn, 3.5 oz (100g) skein of 180yds (164 m)
Rosy (B) – 1 skein
- US size I-9 (3.5 mm) crochet hook

GAUGE: 14 sts and 6 rows = 4"

INSTRUCTIONS:

Make 2. With A, ch 18, sl st to first st to make ring.

Rnds 1-2: Ch 1, sc in ea st in rnd, sl st, ch 1.

Rnd 3: Join B, sc in ea st in rnd, sl st, ch1.

Rnd 4: (2 Sc in next 2 sts) thumb, sc in ea st in rnd, sl st, ch1.

Rnd 5: (2 Sc in next 4 sts) thumb, sc in ea st in rnd, sl st, ch1.

Rnd 6: Sc in ea st in rnd, sl st, ch 1.

Rnds 7-8 thumb: Sc in next 8 sts, turn, ch 1.

Rnd 9 thumb: Sc3tog, sc2tog, sc3tog, turn, ch1

Rnd 10 thumb: Sc3tog, 3 sc down side of thumb to close it, sl st to continue rnd 11 in body of mitten.

Rnds 11-14: Sc in ea st around, sl st, ch 1.

Rnd 15: *Sc in ea 2 sts, sc2tog, rep from * around, sl st, ch 1.

Rnd 16: *Sc in next st, sc2tog, rep from * around, sl st, ch 1.

Rnd 17: *Sc2tog, rep from * around, sl st, ch 1.

Rnd 18: Sc final sts tog. Fasten off.

FINISHING:

With B, ch 16. Fasten off. Tie both ends to sides of mitten.

PINK STRIPED MINI HAT

SKILL LEVEL: EASY

ABBREVIATIONS:

blo = back loop only
ch = chain
ea = each
hk = hook
lp(s) = loop(s)
rep = repeat
sc = single crochet
st(s) = stitch(es)

MEASUREMENTS: Approx. 3" x 3"

MATERIALS:

- I Love This Cotton!, 3.5 oz (100 g) skeins of 180 yds (164 m)
Warm Blush (A) – 1 skein
Rosy (B) – 1 skein
- Yarn Bee® Fur The Love™, 7 oz. (198 g) skein of 37 yds (33 m)
White (C) – 1 skein
- Yarn Bee® Soft & Sleek Chunky™, 5 oz (142 g) skein of 232 yds (212 m)
Ivory (D) – 1 skein
- US Size H/8 (5.0mm) crochet hook

GAUGE: 14 sts and 6 rows = 4"

INSTRUCTIONS:

With A, ch 22.

Row 1: Sc in second ch from hk and ea st across, ch 1, turn.

Row 2: Join B, sc blo in ea st across, ch 1, turn.

Row 3: Join A, sc blo in ea st across row, ch 1, turn.

Row 4-28: Rep rows 2-3.

Fasten off.

FINISHING:

Sew sides together to make hat. Fold up bottom $\frac{3}{4}$ " for brim. With C, wrap approx. 9" of yarn around 2 fingers 3 times. Thread end of yarn through all 3 lps and pull tightly. Sew onto top of hat. With D, ch 25. Stitch ends of ch through top of hat.



SNOWY AND COZY

Snowflake: Crochet in the round, creating seven points with treble crochet stitches.

Hat: Crochet in the back loops to give this hat a ribbed texture. To finish, sew the sides together and add a pom-pom on top.

BLUE MINI HAT:

ABBREVIATIONS:

blo = back loop only	lp(s) = loop(s)
ch = chain	sc = single crochet
ea = each	st(s) = stitch(es)
hk = hook	

MEASUREMENTS: Approx. 3" x 3"

MATERIALS:

- I Love This Cotton!, 3.5 oz (100 g) skein of 180 yds (164 m) Mint (A) - 1 skein
- Yarn Bee® Fur The Love™, 7 oz. (198 g) skein of 37 yds (33 m) White (B) - 1 skein
- Yarn Bee® Soft & Sleek Chunky™, 5 oz (142 g) skein of 232 yds (212 m) Ivory (C) - 1 skein
- US Size H/8 (5.0mm) crochet hook

GAUGE: 14 sts and 6 rows = 4"

INSTRUCTIONS:

With A, ch 22.

Row 1: Sc in second ch from hk and ea st across, ch 1, turn.

Row 2-28: Sc blo in ea st across, ch 1, turn.

Fasten off.

FINISHING:

Sew sides together to make hat. Fold up bottom $\frac{3}{4}$ " for brim. With B, wrap approx. 9" of yarn around 2 fingers 3 times. Thread end of yarn through all 3 lps and pull tightly. Sew onto top of hat. With C, ch 25. Stitch ends of ch through top of hat.

BLUE SNOWFLAKE

SKILL LEVEL: EASY

ABBREVIATIONS:

beg = beginning	sc = single crochet
ch = chain	sk = skip
dc = double crochet	sl st = slip stitch
hk = hook	sp = space
lp = loop	st(s) = stitch(es)
ps = puff stitch	tr = treble crochet
rep = repeat	YO = yarn over
rnd(s) = round(s)	

MEASUREMENTS: Approx. 4" x 4"

MATERIALS:

- I Love This Cotton!, 3.5 oz (142 g) skein of 180 yds (164 m) Mint - 1 skein
- US Size 7 (4.5mm) crochet hook

GAUGE: 14 sts and 6 rows = 4"

SPECIAL STITCHES:

Puff stitch - *YO, insert hk and pull up a lp, rep from * 3 times in same st, YO a final time and pull through all lps.

INSTRUCTIONS:

Ch 5, sl st to join to beg to make a ring.

Rnd 1: Sc 12 in ring, sl st to join to beg.

Rnd 2: Ch 5, 2 dc in next st, *ch 3, sk next st, 2 dc in next st, rep from * to end of rnd, sl st in third ch of beg ch 5 to join.

Rnd 3: Ch 2, *ps in ch 3 sp, ch 3, sk next st, sc in next dc from previous rnd, rep from * around, sl st to join to beg ch 2.

Rnd 4: *Ch 2, 4 tr in ch 3 sp, dc in next st, rep from * around, sl st to join to beg ch 2.

Rnd 5: *Ch 5, sk 2 sts, dc in next st, ch 4, sk next st, dc in next st, *ch 4, sk 2 sts, dc in next st, ch 4, sk next st, dc in next st, rep from * around, sl st to join to beg.

Rnd 6: Sc in next 5 chs, *3 tr in next st, sc in next 4 chs, sc in next st, sc in next 4 chs, rep from * around, sl st to join to beg, ch 20, sl st to join to eighth ch from hk to create lp.

FINISHING:

Wrap yarn around lp base and tie off.



STOCKED UP

A tight single crochet stitch gives these stockings structure. Crochet in a spiral, and change the color as desired for stripes and heel accents.

Tip: Use an invisible join to get seamless color changes like these.

SKILL LEVEL: EASY

ABBREVIATIONS:

ch = chain
 ea = each
 inc = increase
 rep = repeat
 rnd(s) = round(s)
 sc = single crochet
 sc2tog = single crochet two stitches together
 sk = skip
 sl st = slip stitch
 st(s) = stitch(es)

MEASUREMENTS: Approx. 2" x 2"

MATERIALS:

- I Love This Cotton!, 3.5 oz. (100 g) skeins of 180 yds (164 m)
 Sage (A) - 1 skein
 Pistache (B) - 1 skein
 Ivory (C) - 1 skein
- US Size I-9 (3.5 mm) crochet hook

GAUGE: 13 sts and 14 rows = 4"

INSTRUCTIONS:

GREEN/IVORY STOCKING:

With A, make magic ring.

Rnd 1: 5 Sc into ring, sl st to first st.

Rnd 2: 2 Sc in ea st around, sl st to first st.

Rnd 3: Sc in first st, 2 sc in next st, *sc in next st, 2 sc in next st, rep from * all around, sl st to join.

Rnd 4: Sc in ea st around, sl st to join.

Rnd 5: Join C, sc in ea st around, inc 1 st in the rnd, sl st to join.

Rnd 6: Sc in ea st around, inc 1 st in the rnd, sl st to join.

Rnd 7: Join A, sc in ea st around, inc 1 st in the rnd, sl st to join.

Rnd 8: Rep rnd 6.

HEEL:

Work in rows.

Row 1: Join C, sc 9, ch 1, turn.

Row 2: Sc in next 3 sts, sc2tog, sc in next 3 sts, sl st, ch 1, turn.

Row 3: Sk st, sc in next 2 sts, sc2tog, sc in next 2 sts, sl st, ch 1, turn.

Row 4: Sk st, sc, sc2tog, sc, sl st, ch 1, turn.

Row 5: Sk st, sc2tog, sl st, fasten off.

Continue working in the rnd.

Rnd 9: Join A, distribute 20 sc all around, sl st to join, ch 1.

Rnd 10: Sc in ea st around, sl st to join.

Rnd 11: Join C, sc in ea st around, sl st to join.

Rnd 12: Rep rnd 10.

Rnd 13: Join A, sc in ea st around, sl st to join.

Rnd 14: Rep rnd 10.

Rnd 15: Join C, sc in ea st around, sl st to join.

Rnd 16: Rep rnd 10.

Rnd 17-20: Rep rnds 13-16. Fasten off.

Fold stocking in half and join C, ch 9, sl st to first ch.

PISTACHE STOCKING:

Follow instructions for Green/Ivory Stocking. Start with B. Join A in rnds 5-8. Make heel with B. Continue with A in rnd 9 and finish last two rnds with B.



CHRISTMAS BASKETS

To make sturdy storage baskets, use bulky yarn with tight single-crochet stitching. Cut out a foam board circle to reinforce the bottom, and place it inside. Then sew felt holly leaves and bells to the side of the finished piece.

SKILL LEVEL: EASY

ABBREVIATIONS:

blsc = back loop single crochet

ch = chain

dec = decrease

ea = each

flsc = front loop single crochet

hk = hook

inc = increase

pm = place marker

rep = repeat

rnd(s) = round(s)

sc = single crochet

sl = slip

sp = space

st(s) = stitch(es)

tog = together

MEASUREMENTS:

J basket: Approx. 36" x 12"

Snowflake basket: Approx. 33" x 12"

Y basket: Approx. 30" x 12"

MATERIALS:

- Yarn Bee® Uber Luxe™, 7 oz (200 g) skeins of 42 yds (38 m)
Cranberry (A) – 12 skeins
Light Grey (B) – 8 skeins
- US size P (12 mm) crochet hook
- Yarn needle
- Stitch marker

GAUGE: 5 sts and 5 rows = 3"

INSTRUCTIONS:

J BASKET:

With A, ch 55, sl st to make ring.

Pm in the first st of ea rnd to mark where new rnd begins.

Rnds 1-19: Sc in ea st around all rows. Follow illustration #1 to join B and create the design.

BOTTOM OF J BASKET:

With A, ch 3, sl st to make ring.

Rnd 1: 7 Sc into ring.

Rnd 2: 2 Sc in ea st in rnd.

Rnd 3: *Sc in next st, 2 sc in next st, rep from * to end of rnd.

Rnd 4: *Sc in next 2 sts, 2 sc in next st, rep from * to end of rnd.

Rnd 5: *Sc in next 3 sts, 2 sc in next st, rep from * to end of rnd.

Rnd 6: *Sc in next 4 sts, 2 sc in next st, rep from * to end of rnd.

Rnd 7: *Sc in next 5 sts, 2 sc in next st, rep from * to end of rnd.

Rnd 8: *Sc in next 6 sts, 2 sc in next st, rep from * to end of rnd.

Rnd 9: Sc in ea st dec 1 st in rnd.

Join bottom circle to bottom edge of basket with sc in ea st in rnd.

Edge: With B, mark handles and tie piece with 8 chs on ea sp, blsc in ea st in rnd, flsc in ea st in rnd, sc in ea st in rnd wrapping 2 previous rnds tog.

SNOWFLAKE BASKET:

With B, ch 50, sl st to make ring.

Pm in first st of ea rnd to mark where new rnd begins.

Rnds 1-19: Sc in ea st around all rows. Follow illustration #2 to join A and create the design.

BOTTOM OF SNOWFLAKE BASKET:

With A, ch 3, sl st to make a ring.

Rnd 1: 7 Sc into ring.

Rnd 2: 2 sc in ea st in rnd.

Rnd 3: *Sc in next st, 2 sc in next st, rep from * to end of rnd.

Rnd 4: *Sc in next 2 sts, 2 sc in next st, rep from * to end of rnd.

Rnd 5: *Sc in next 3 sts, 2 sc in next st, rep from * to end of rnd.

Rnd 6: *Sc in next 4 sts, 2 sc in next st, rep from * to end of rnd.

Rnd 7: *Sc in next 5 sts, 2 sc in next st, rep from * to end of rnd.

Rnd 8: Sc in ea st inc 1 st in rnd.

Join bottom circle to bottom edge of basket with sc in ea st in rnd.

Edge: With A, mark handles and tie piece with 7 chs on ea sp, blsc in ea st in rnd, flsc in ea st in rnd, sc in ea st in rnd wrapping two previous rnds tog.

Y BASKET:

With A, ch 45, sl st to make a ring. Pm in the first st of ea rnd to mark where new rnd begins.

Rnds 1-19: Sc in ea st in rnd. Follow illustration #3 to join B and create the design.

BOTTOM OF Y BASKET:

With A, ch 3, sl st to make a ring.

Rnd 1: 7 Sc into ring.

Rnd 2: 2 Sc in ea st in rnd.

Rnd 3: *Sc in next st, 2 sc in next st, rep from * to end of rnd.

Rnd 4: *Sc in next 2 sts, 2 sc in next st, rep from * to end of rnd.

Rnd 5: *Sc in next 3 sts, 2 sc in next st, rep from * to end of rnd.

Rnd 6: *Sc in next 4 sts, 2 sc in next st, rep from * to end of rnd.

Rnd 7: Sc in ea st inc 3 sts in rnd.

Join bottom circle to bottom edge of basket with sc in ea st in rnd.

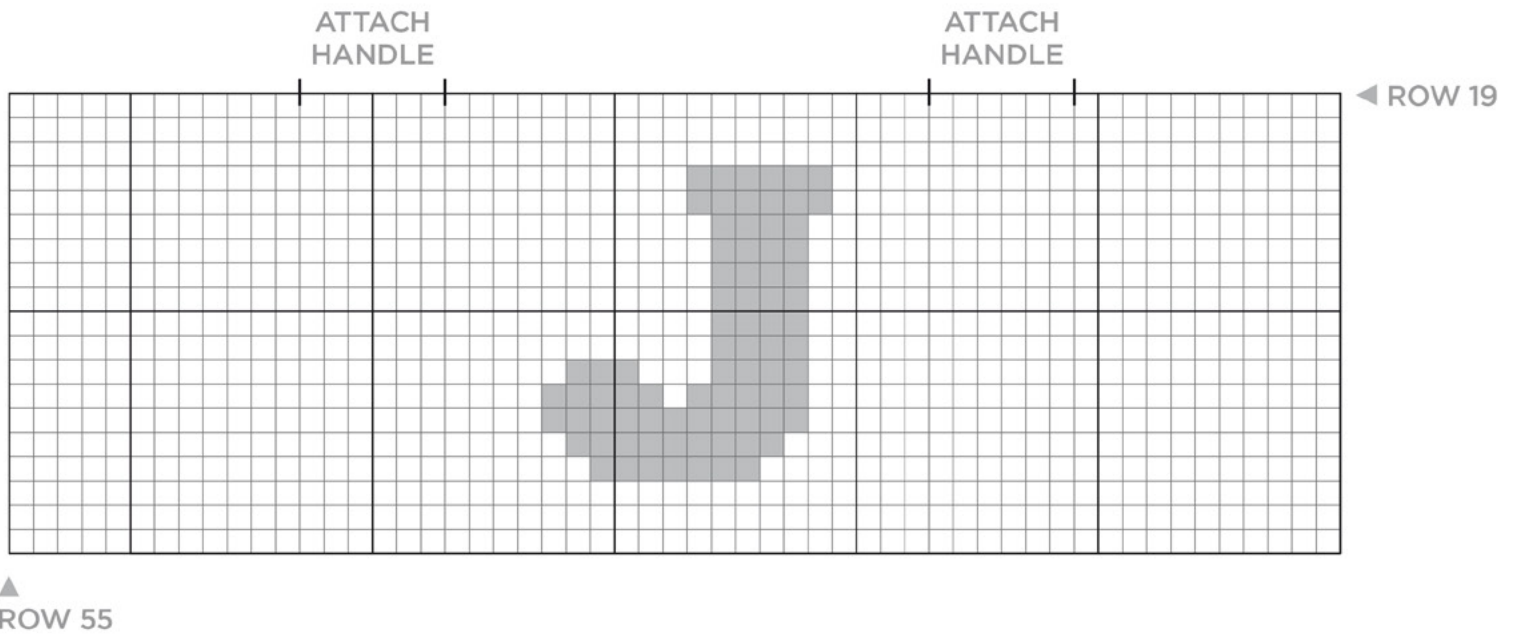
Edge: With B, mark handles and tie piece with 6 chs on ea sp, blsc in ea st in rnd, flsc in ea st in rnd, sc in ea st in rnd wrapping 2 previous rnds tog.

FINISHING:

Cut 3 leaves from felt and attach 3 Christmas bells per basket. Sew embellishments onto each basket.

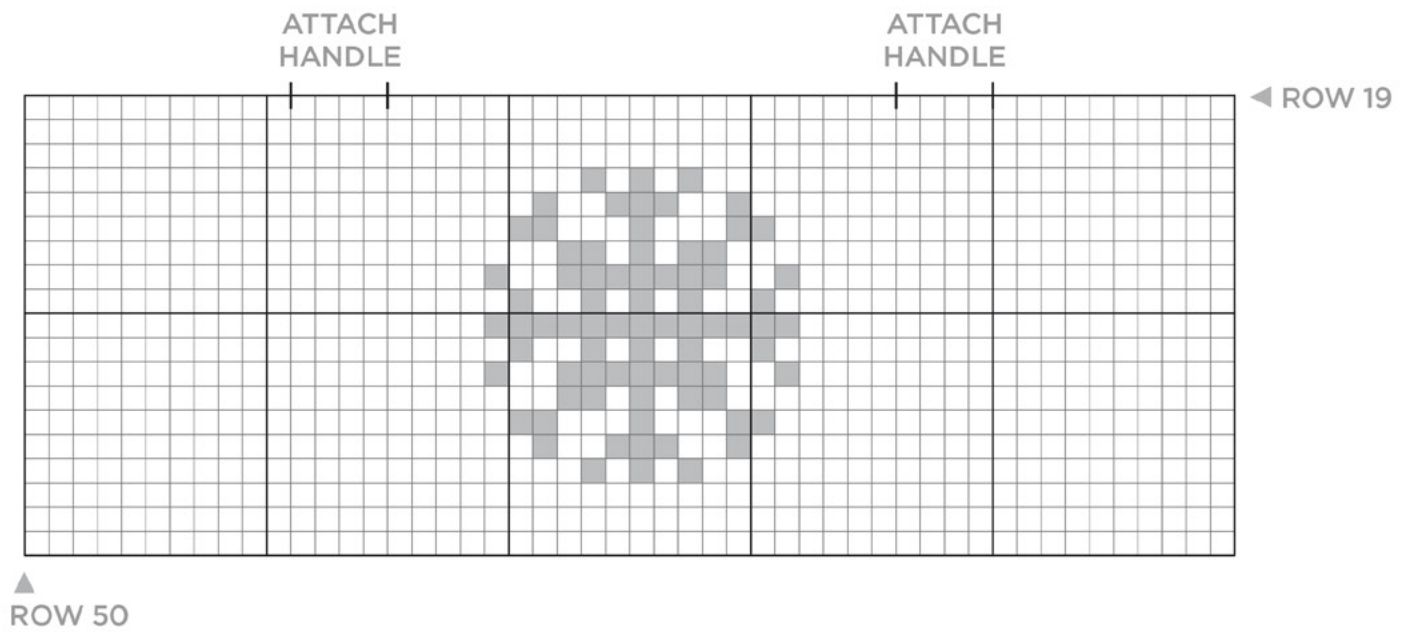
NESTING JOY BASKETS

"J" BASKET



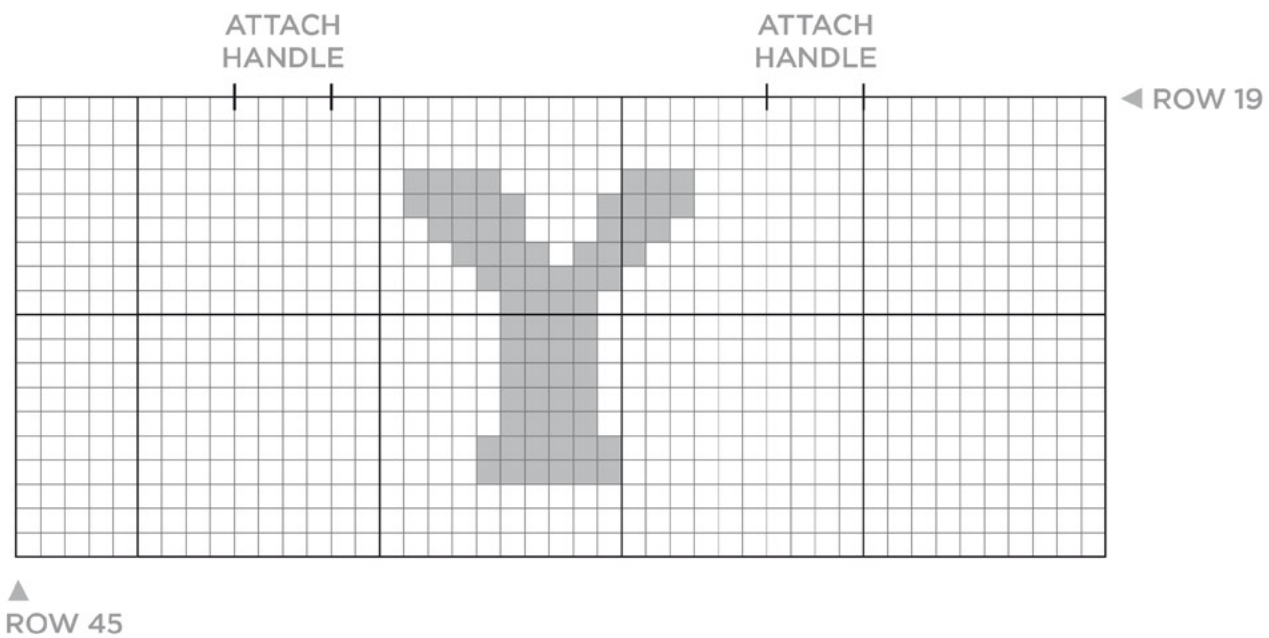
NESTING JOY BASKETS

SNOWFLAKE BASKET



NESTING JOY BASKETS

“Y” BASKET





ON THE TABLE

Try pairing a solid color yarn with a complementary gradient yarn.

When stranded together, they create a subtle multicolored effect that's ideal for showing off the cable stitches in this table runner.

FALL TABLE RUNNER

SKILL LEVEL: INTERMEDIATE

ABBREVIATIONS:

2cb = 2-stitch cable back
2cf = 2-stitch reverse cable front
6cb = 6-stitch cable back
6cf = 6-stitch cable front
BO = bind off
cn = cable needle

CO = cast on
k = knit
kn = knitting needle
p = purl
sl = slip
st(s) = stitch(es)

MEASUREMENTS: Approx. 14" x 36-108"

MATERIALS:

- Yarn Bee® Must Be Merino Aran™, 3.5 oz (99 g) skeins of 153 yds (140 m)
- Yarn Bee® Authentic Hand-Dyed Tonal™, 3.5 oz (99 g) skeins of 420 yds (384m) Chestnut Ember (B) – 2 skeins
- US Size 10 (6mm) straight knitting needles
- Cable needle

GAUGE: 16 sts and 24 rows = 4"

SPECIAL STITCHES:

2-stitch cable back: Sl st on cn holding it at back, k1, sl holding st back on kn, p1.

2-stitch reverse cable front: Sl st on cn holding it at front, p1, sl holding st back on kn, k1.

6-stitch cable back: Sl 3 sts on cn holding it at back, p3, sl 3, holding sts back on kn, p3.

6-stitch cable front: sl 3 sts on cn, holding it at front, p3, sl 3, holding sts back on kn, p3.

INSTRUCTIONS:

With double strand yarn (1 of A and 1 of B), CO 56 sts.

Row 1: K5, p2, k2, p2, k6, p2, k2, p5, k1, p2, k1, p5, k2, p2, k6, p2, k2, p2, k5.

Row 2: P5, k2, p2, k2, p6, k2, p2, k4, 2cf, k2, p1, k5, p2, k2, p6, k2, p2, k2, p5.

Row 3: K5, p2, k2, p2, k6, p2, k2, p4, 2cb, p3, 2cf, p3, k2, p2, k6, p2, k2, p2, k5

Row 4: K7, p2, k2, p6, k2, p2, k3, p1, k5, p1, k4, p2, k2, p6, k2, p2, k7.

Row 5: P7, k2, p2, k6, p2, k2, p3, 2cb, p5, k1, p3, k2, p2, k6, p2, k2, p7.

Row 6: K7, p2, k2, p6, k2, p2, k3, 2cb, k5, p1, k3, p2, k2, p6, k2, p2, k7.

Rep rows 1-6 in first and last 11 sts. Instructions in following rows start after and end before those 11 sts.

Row 7: K6, p2, k2, p2, *2cb, p4, rep from *, k2, p2, k6.

Row 8: P6, k2, p2, k4, 2cf, k4, 2cf, k2, p2, k2, p6.

Row 9: K6, p2, k2, p3, k1, p5, 2cf, p3, k2, p2, k6.

Row 10: P6, k2, p2, k3, p1, k5, 2cf, k3, p2, k2, p6.

Row 11: K all knit sts and p all purl sts.

Row 12: 6Cf, k2, p2, k3, 2cb, k3, 2cf, k4, p2, k2, 3cb.

Rep rows 1-12 in first and last 23 sts. Instructions in following rows start after and end before those 23 sts.

Row 13: P3, k1, p2, 2cb, p2.

Row 14: K3, p1, k1, 2cf, k3.

Rows 15-23: Rep row 11.

Row 24: K3, p1, k1, 2cb, k3.

Row 25: P2, 2cb, p2, k1, p3.

Row 26: K2, 2cf, k3, 2cb, k1.

Row 27: Rep row 11.

Row 28: K1, 2cf, k5, p1, k1.

Row 29: P1, 2cf, p5, k1, p1.

Row 30: 2Cf, k4, 2cf, k2.

Row 31: P2, 2cb, p4, 2cb.

Row 32: K1, p1, k5, 2cb, k1.

Row 33: P1, k1, p5, 2cb, p1.

Row 34: Rep row 11.

Row 35: P1, 2cf, p3, 2cb, p2.

Row 36: K3, 2cb, k1, 2cf, k2.

Row 37-46: Rep row 11.

Row 47: P3, k1, p1, 2cf, p3.

Row 48-end: Rep rows 2-47 to desired length.

BO.

FINISHING:

Block.



WRAPPED UP

This plush look comes from Yarn Bee® Chunky Knit Velvet Yarn. Crochet around a foam wreath (Floral Department). Then carve pumpkin shapes from foam balls, wrap them with yarn and cut small pieces of wood for stems. Pin hand-cut felt leaves and petals to the wreath, and adhere them with hot glue.

