

# Bottled

## BEAUTY

Uncork **glass bottle**  
inspiration with these  
project ideas.



**HOBBY LOBBY®**



## Ring It On

When it comes to kitchen organization, take glass jars for a spin! Stain and stack wood rings, gluing them to secure. Then just slide the jars inside.

*Tip: Coat the inside of taller jars with acrylic paint and let the tops peek over the wood rings.*



**ON THE COVER:** Custom tea containers: Tie paper florals and a stamped wood label to cylinder jars, and replace the metal lid with a cork stopper.

## Marvelous Metallics ▸

Try frosted glass spray paint, wax metallic finish and gold leaf for a glass canister that looks like it's made of metal. To DIY the lid: Glue a balsa wood round (cut to the circumference of the container's opening) to a stained wood coaster and drill holes for stems.

## Jammin' Jars ▾

All in favor of handmade gifts, say "yum!" These 8-ounce mason jars are the perfect size for take-home treats. And since they're already small and cute, it doesn't take much to dress them up. A vinyl label, parchment paper, cording and paper leaves do the trick.





## Petal ▲ Perfection

Transform simple glass bottles into apothecary-inspired candleholders by filling them with dried florals and topping them with candle rings—they're typically used to catch wax as it drips down candles, but here they make the perfect tealight holder.

## On the Wall ▲

There's no carpentry experience required to DIY these wall-mounted vases. You'll just need glass bottles, pre-stained barn wood, cork fabric (found in the Fabric Department) and decorative tacks.





## Making Scents

DIY reed diffusers: Glue wood candlesticks to the bottom of glass bottles, then glue on wood embellishments, like furniture buttons, dowel pins and split balls. Apply modeling paste around the wood, then paint the piece to finish. Aromatherapy is now in session!





## Comfy Cozy ▲

Love these bottles turned boho décor? It's time to grab your knitting needles! Follow the patterns for these covers, and accessorize with pre-dyed beads from the Jewelry Making Department.

## Star Jar ►

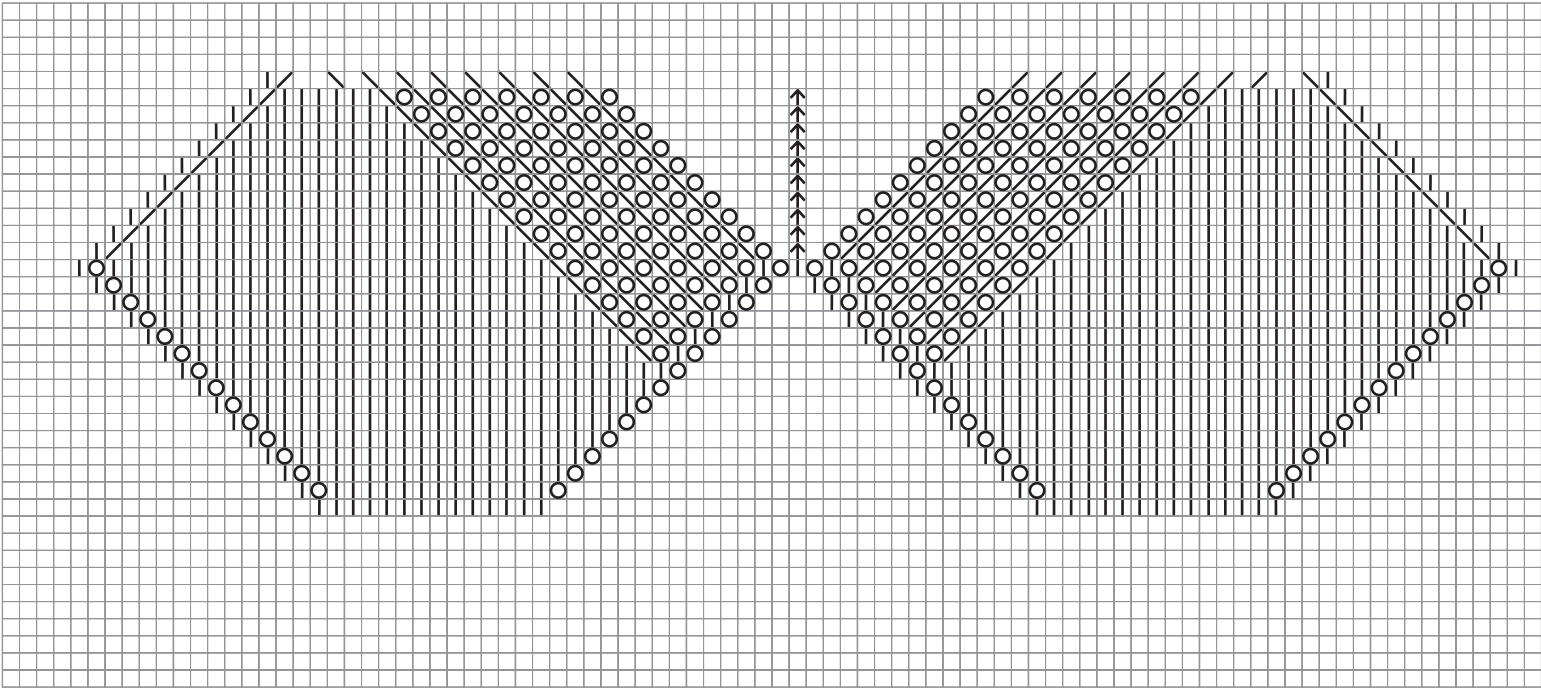
The how-to: Spritz a jar with a water and vinegar solution, then apply looking glass spray paint. Alter the lid to accommodate a corded lightbulb, and DIY a macramé cover to take the look over the top.



# GLASS BOTTLE DIYS

## YARN BOTTLE COVERS (1 of 3)

### ROUND BOTTLE:



KEY		
	<b>KNIT</b>	
/	<b>K2TOG</b>	KNIT 2 STITCHES TOGETHER
\	<b>SSK</b>	SLIP SLIP KNIT STITCH
↑	<b>CDD</b>	CENTER DOUBLE DECREASE
○	<b>YO</b>	YARN OVER

# GLASS BOTTLE DIYS

## YARN BOTTLE COVERS (2 of 3)

**SKILL LEVEL:** Medium

### ABBREVIATIONS:

- BO** – bind off
- cdd** – center double decrease
- ch** – chain
- CO** – cast on
- ea** – each
- k** – knit
- k2tog** – knit two stitches together
- lp(s)** – loop(s)
- p** – purl
- rep** – repeat
- rnd(s)** – round(s)
- sc** – single crochet
- sm** – stitch marker
- ssk** – slip slip knit stitch
- st(s)** – stitch(es)
- yo** – yarn over

### MEASUREMENTS:

Round bottle cover:  
7 ½" tall x 6 ⅞" wide

Stockholm bottle cover:  
8 ½" tall x 3 ¾" diameter

### MATERIALS:

- Yarn Bee® Must Be Merino™, 3.5 oz (100 g) skeins of 227 yds (208 m):
  - Blush (A) – 1 skein
- Yarn Bee® Yarntopia™, 4 oz (113 g) skeins of 312 yds (285 m):
  - Ivory (B) – 1 skein
- US size 4 (3.5 mm) double point knitting needles
- US size D/3 (3.25 mm) crochet hook
- Beads
- Stitch marker
- Yarn needle

**GAUGE:** 11 sts and 16 rows = 2"

### INSTRUCTIONS:

**ROUND BOTTLE:** With A, CO 8 sts.

**Rnd 1:** K around, sm. Rep rnd 1 in all odd rnds.

**Rnd 2:** \*k, yo, rep from \* around, sm.

**Rnd 4:** \*k2, yo, rep from \* around, sm.

**Rnd 6:** \*k3, yo, rep from \* around, sm.

**Rnd 8:** \*k4, yo, rep from \* around, sm.

**Rnd 10:** \*k5, yo, rep from \* around, sm.

**Rnd 12:** \*k6, yo, rep from \* around, sm.

**Rnds 13-19:** K around, sm.

**Rnd 20:** K2tog around, stretching ea st up to 2".

**Rnd 21:** Group 4 stretched sts together and CO (k, yo) four times on ea group (7 groups with 8 st ea = 56 sts).

**Rnds 22-29:** K around, sm.

**Rnd 30:** K, ssk, k50, k2tog, k, turn.

**Row 31:** P across, turn. Rep this row in all odd rows.

**Row 32:** K, ssk, k48, k2tog, k, turn.

**Rows 34-45:** K, ssk, yo, k48, yo, k2tog, k, turn.

**Rows 35-47:** K, ssk, k48, k2tog, k, turn.

**Row 48:** K, ssk, k13, cdd, k14, cdd, k13, k2tog, k, turn.

**Row 50:** K, ssk, k11, cdd, k12, cdd, k11, k2tog, k, turn.

**Row 52:** K, ssk, k9, cdd, k10, cdd, k9, k2tog, k, turn.

**Row 54:** K, ssk, k7, cdd, k8, cdd, k7, k2tog, k, turn.

**Row 56:** K, ssk, k5, cdd, k6, cdd, k5, k2tog, k, turn.

**Row 57:** P across, BO.

Work two rows of sc on open space. Add ch 2 lps to last row every 4 sc in both sides of open space. Make twisted cord. Run cord through lps like shoelaces. Add bead to hold and two at ends of cords.



## YARN BOTTLE COVERS (3 of 3)

**STOCKHOLM BOTTLE:** With B, CO 29 sts.

**Row 1:** P30 around. Rep row 1 in all odd rows, turn.

**Row 2:** K, yo, k13, yo, k, yo, k13, yo, k.

**Row 4:** K, yo, k15, yo, k, yo, k15, yo, k.

**Row 6:** K, yo, k17, yo, k, yo, k17, yo, k.

**Row 8:** K, yo, k19, yo, k, yo, k19, yo, k.

**Row 10:** K, yo, k21, yo, k, yo, k21, yo, k.

**Row 12:** K, yo, k23, yo, k, yo, k23, yo, k.

**Row 14:** K, yo, k25, yo, k, yo, k25, yo, k.

**Row 16:** K, yo, k27, yo, k, yo, k27, yo, k.

**Row 18:** K, yo, k26, k2tog, yo, k, yo, k, yo, k, yo, ssk, k26, yo, k.

**Row 20:** K, yo, k26, k2tog, yo, k2tog, yo, k, yo, k, yo, k, yo, ssk, yo, ssk, k26, yo, k.

**Row 22:** K, yo, k26, k2tog, yo, k2tog, yo, k2tog, yo, k, yo, k, yo, k, yo, ssk, yo, ssk, yo, ssk, k26, yo, k.

**Row 24:** K, yo, k26, k2tog, yo, k2tog, yo, k2tog, yo, k2tog, yo, k, yo, k, yo, k, yo, ssk, yo, ssk, yo, ssk, yo, ssk, k26, yo, k.

**Row 26:** K, yo, k26, k2tog, yo, k2tog, yo, k2tog, yo, k2tog, yo, k, yo, k, yo, k, yo, ssk, yo, ssk, yo, ssk, yo, ssk, k26, yo, k.

**Row 28:** K, yo, k26, k2tog, yo, k2tog, yo, k2tog, yo, k2tog, yo, k2tog, yo, k, yo, k, yo, k, yo, ssk, yo, ssk, yo, ssk, yo, ssk, yo, ssk, k26, yo, k.

**Row 30:** K, yo, k26, k2tog, yo, k2tog, yo, k2tog, yo, k2tog, yo, k2tog, yo, k2tog, yo, k, yo, k, yo, k, yo, ssk, yo, ssk, yo, ssk, yo, ssk, yo, ssk, yo, ssk, k26, yo, k.

**Row 32:** K, ssk, k24, k2tog, yo, k2tog, yo, k2tog, yo, k2tog, yo, k2tog, yo, k2tog, yo, k2tog, yo, cdd, yo, ssk, yo, ssk, yo, ssk, yo, ssk, yo, ssk, yo, ssk, yo, ssk, k24, k2tog, k.

**Row 34:** K, ssk, k22, k2tog, yo, k2tog, yo, k2tog, yo, k2tog, yo, k2tog, yo, k2tog, yo, cdd, yo, ssk, yo, ssk, yo, ssk, yo, ssk, yo, ssk, yo, ssk, yo, ssk, k22, k2tog, k.

**Row 36:** K, ssk, k20, k2tog, yo, k2tog, yo, k2tog, yo, k2tog, yo, k2tog, yo, k2tog, yo,

k2tog, yo, cdd, yo, ssk, yo, ssk, yo, ssk, yo,  
ssk, yo, ssk, yo, ssk, yo, ssk, k20, k2tog, k.

**Row 38:** K, ssk, k18, k2tog, yo, k2tog, yo, k2tog, yo, k2tog, yo, k2tog, yo, k2tog, yo, k2tog, yo, cdd, yo, ssk, yo, ssk, yo, ssk, yo, ssk, yo, ssk, yo, ssk, yo, ssk, k18, k2tog, k.

**Row 40:** k, ssk, k16, k2tog, yo, k2tog, yo, k2tog, yo, k2tog, yo, k2tog, yo, k2tog, yo, k2tog, yo, cdd, yo, ssk, yo, ssk, yo, ssk, yo, ssk, yo, ssk, yo, ssk, yo, ssk, k16, k2tog, k.

**Row 42:** K, ssk, k14, k2tog, yo, k2tog, yo, k2tog, yo, k2tog, yo, k2tog, yo, k2tog, yo, cdd, yo, ssk, yo, ssk, yo, ssk, yo, ssk, yo, ssk, yo, ssk, yo, ssk, k14, k2tog, k.

**Row 44:** k, ssk, k12, k2tog, yo, k2tog, yo, k2tog, yo, k2tog, yo, k2tog, yo, k2tog, yo, k2tog, yo, cdd, yo, ssk, yo, ssk, yo, ssk, yo, ssk, yo, ssk, yo, ssk, yo, ssk, k12, k2tog, k.

**Row 46:** k, ssk, k10, k2tog, yo, k2tog, yo, k2tog, yo, k2tog, yo, k2tog, yo, k2tog, yo, k2tog, yo, cdd, yo, ssk, yo, ssk, yo, ssk, yo, ssk, yo, ssk, yo, ssk, yo, ssk, k10, k2tog, k.

**Row 48:** K, ssk, k8, k2tog, yo, k2tog, yo, k2tog, yo, k2tog, yo, k2tog, yo, k2tog, yo, cdd, yo, ssk, yo, ssk, yo, ssk, yo, ssk, yo, ssk, yo, ssk, yo, ssk, k8, k2tog, k.

**Row 50:** K, ssk, k6, k2tog, yo, k2tog, yo, k2tog, yo, k2tog, yo, k2tog, yo, k2tog, yo, cdd, yo, ssk, yo, ssk, yo, ssk, yo, ssk, yo, ssk, yo, ssk, yo, ssk, k6, k2tog, k.

**Row 52:** K, k2tog across k, BO.

Sew bottom and half side of piece. Add row of sc on open space. Tie yarn piece to bottle's neck. Add tassel and ring of wood beads.

## Let's Vase It

This vase may look like pottery, but it's actually a mason jar covered in air-dry modelling clay. Apply the clay to the outside ( $\frac{1}{4}$ " thick works great), adding indentations to create a pattern. Let it dry, then paint the piece with a mixture of gloss glaze and paint.



**Note:** Don't leave burning candles unattended.



## ▲ Light the Way

Tapered-neck bottles make for instant candleholders. And to turn them into full-on décor? Display them in a DIY stand. This one is three wood rings glued together with a button-topped dowel on each side, painted with a patina kit and mounted on a handmade wood base.

## ▲ Leather Weather

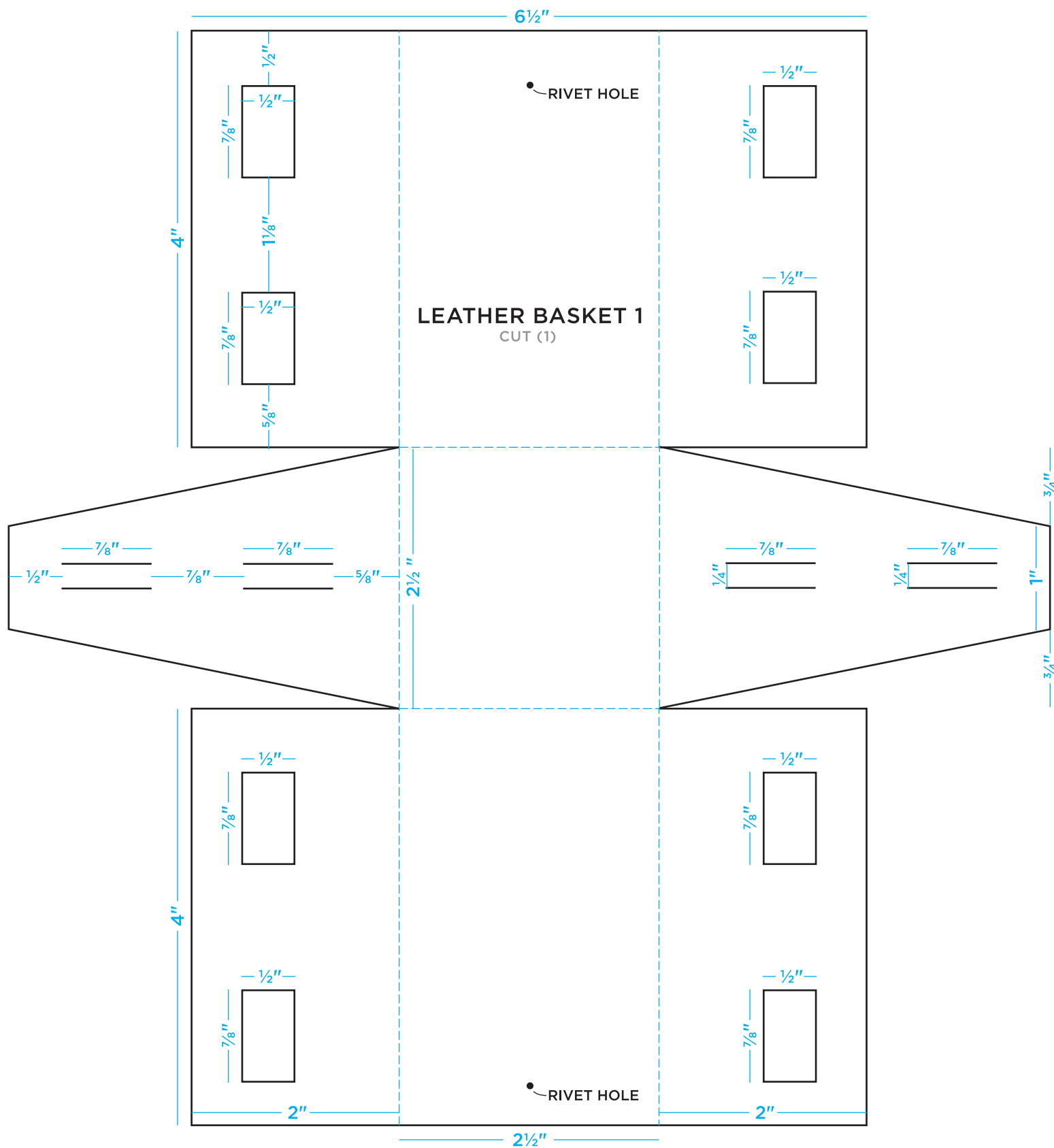
These square mason jars became chic planters with a little leathercrafting. Once you've cut out the template pieces (found below), secure the hanger with rivets and cut-to-size dowels. Then tuck a plant into the jar, and nestle the jar into the hanger.



# GLASS BOTTLE DIYS

## LEATHER BASKETS (1 of 2)

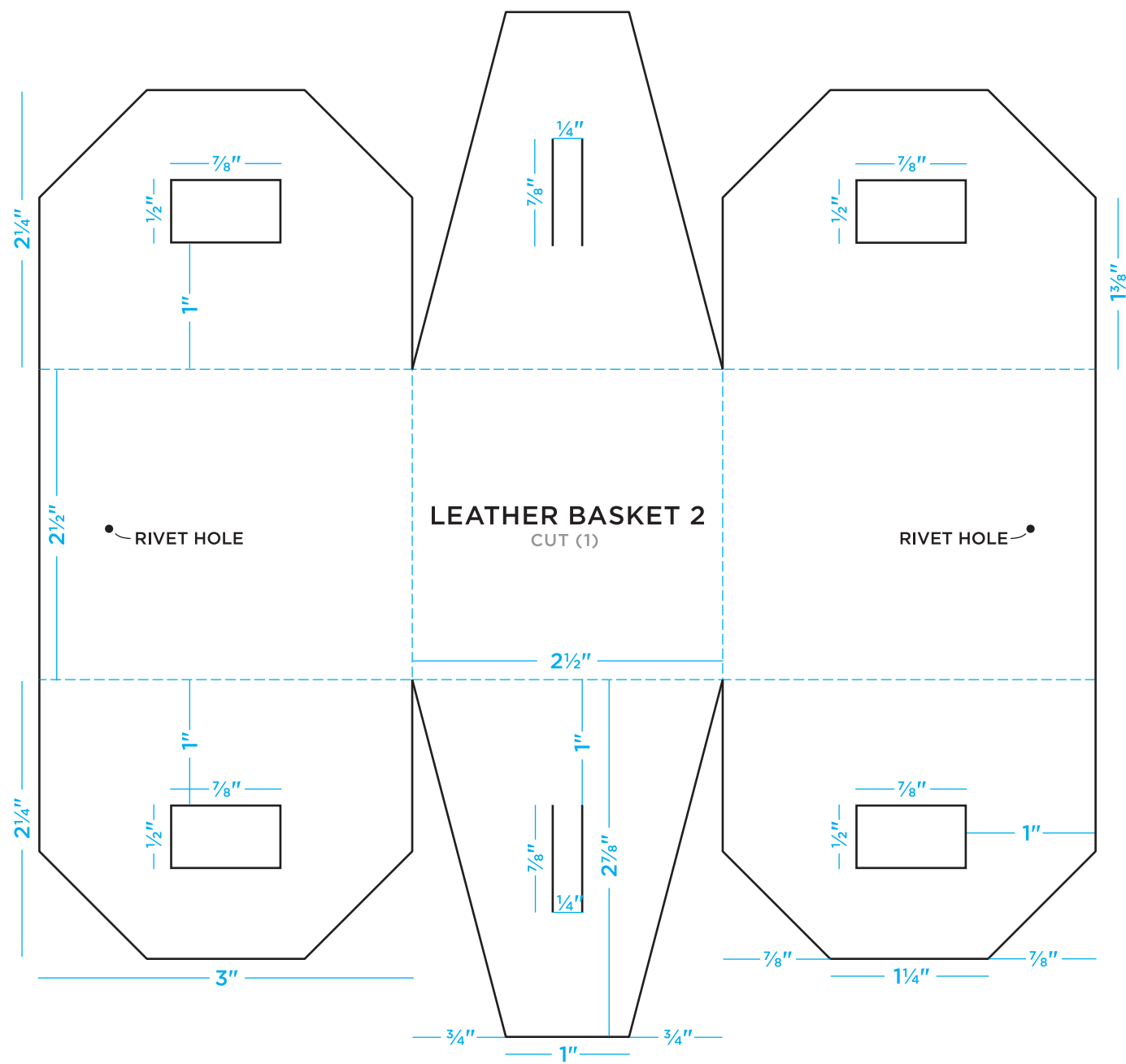
SCALED AT 80%



# GLASS BOTTLE DIYS

## LEATHER BASKETS (2 of 2)

SCALED AT 80%



SCALED AT 35%

