



METAL GALLERY

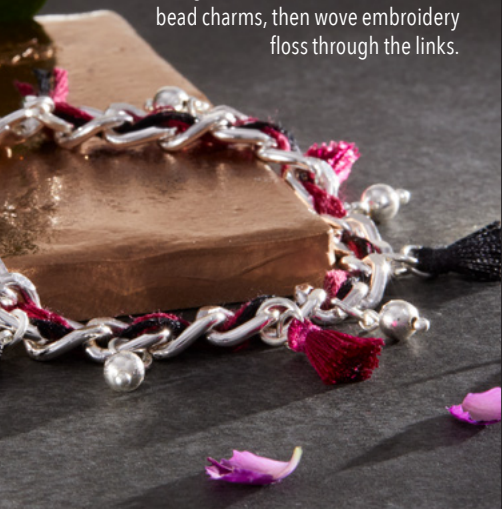
These Necklaces, Earrings & Bracelets
WERE MADE TO SHINE



HOBBY LOBBY®

Bracelet Yourself

Incorporate textile elements to add a sense of softness to metal jewelry. We embellished a length of chain with tassels and DIY bead charms, then wove embroidery floss through the links.



Here's to Ears

If your favorite earrings are the kind that seem to dance in the breeze, making your own is as simple as mastering the art of creating handmade dangles (left: sections of various chains, right: DIY bead charms).

Chose a Rose

Chunky chain or strand of beads? How about both? Create a custom necklace like this by replacing one side of a chain with hand-strung beads and attaching a focal charm (ours is a rose outline pendant).



Think Pink

When it comes to mixing textures, a good rule of thumb is to anchor the look with a single metal. So when you're experimenting with materials like glass beads, wood rings and even faux fur, the look is balanced, not busy.





Copper Tones

Equal parts edgy and elegant, this copper creation started out as a ready-to-go hammered charm. Faceted beads, a bit of wire wrapping and a delicate chain turned it into a one-of-a-kind statement-maker.



Charmed, I'm Sure

Hammered metal components = instant dose of DIY. Pair these textured pieces with basic findings (chains, earring posts and elastic cord) to really dial up the handmade charm.



Flower Power

Metal Gallery™ has grown! In addition to all the silver and gold beauties you could dream of, you'll also find some materials that might surprise you, like wicker and polymer clay.



Link Again

Double the strands, double the style! This gold and pink dream of a necklace features a tortoiseshell-and-paperclip-chain combo, a shorter strand of beads and a gold-flecked tassel pendant.



In the Mix

Mixing metals? It's all about layering. The bracelet is a gold chain and a hand-beaded strand paired with a length of paperclip chain. And the necklace is a charm-embellished carabiner clasp attached to a simple chain.



Bead It

Accent an all-silver palette with pops of blue and hints of black for a classic combo that's always in style.

Bracelets: metal and alphabet beads on elastic cord. **Necklace:** handmade bead charms and a DIY two-strand chain.