

FREE
INSPIRATION!

Custom ENVELOPES

INCLUDES
*Step-by-Step
Instructions!*



LIVE A
CREATIVE
LIFE!®

HOBBY LOBBY®

MAIL CALL

All of these colorful envelopes (made from pearlized cardstock) can be cut by hand with scissors or a craft knife, but we used a cutting machine for more precise designs. Be sure to cut the outer piece first, and then glue in the lining—it'll show through the cutouts.



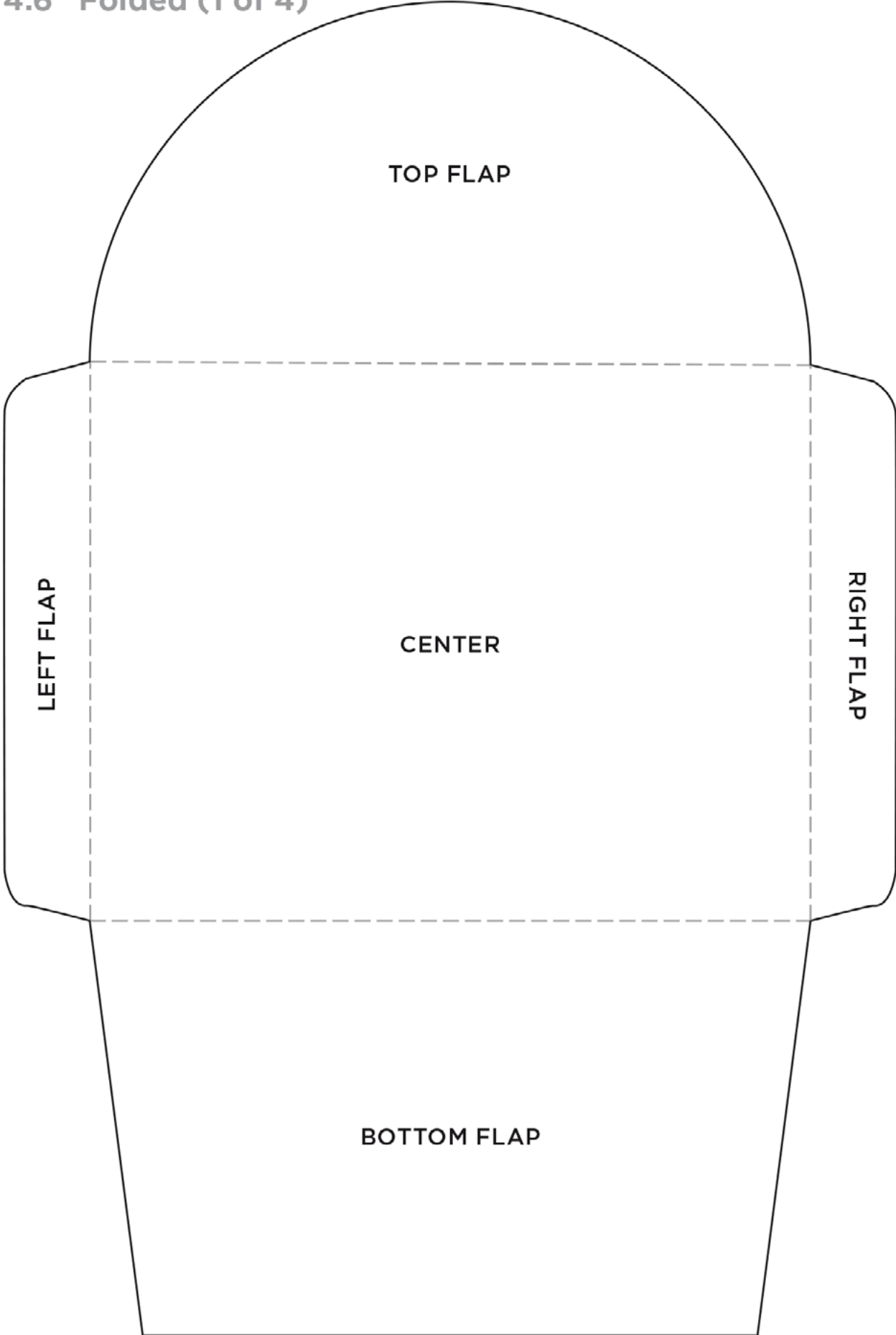
CUSTOM ENVELOPES

MAIL CALL HALF CIRCLE

6" x 4.6" Folded (1 of 4)

SCALED AT 75%

See 2-4 for full-size template



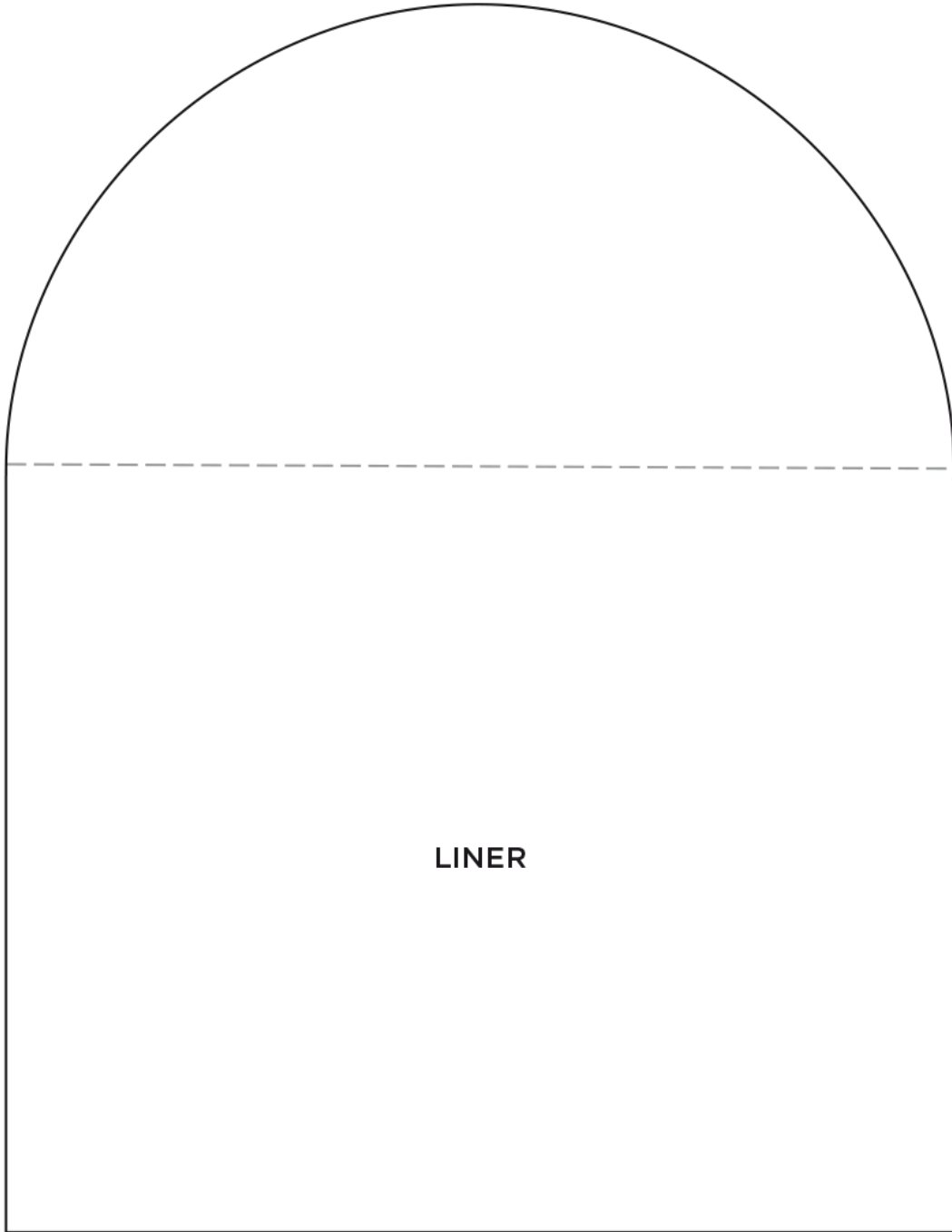
CUSTOM ENVELOPES

MAIL CALL HALF CIRCLE

6" x 4.6" Folded (2 of 4)

Cut: _____

Fold: - - - - -



LINER

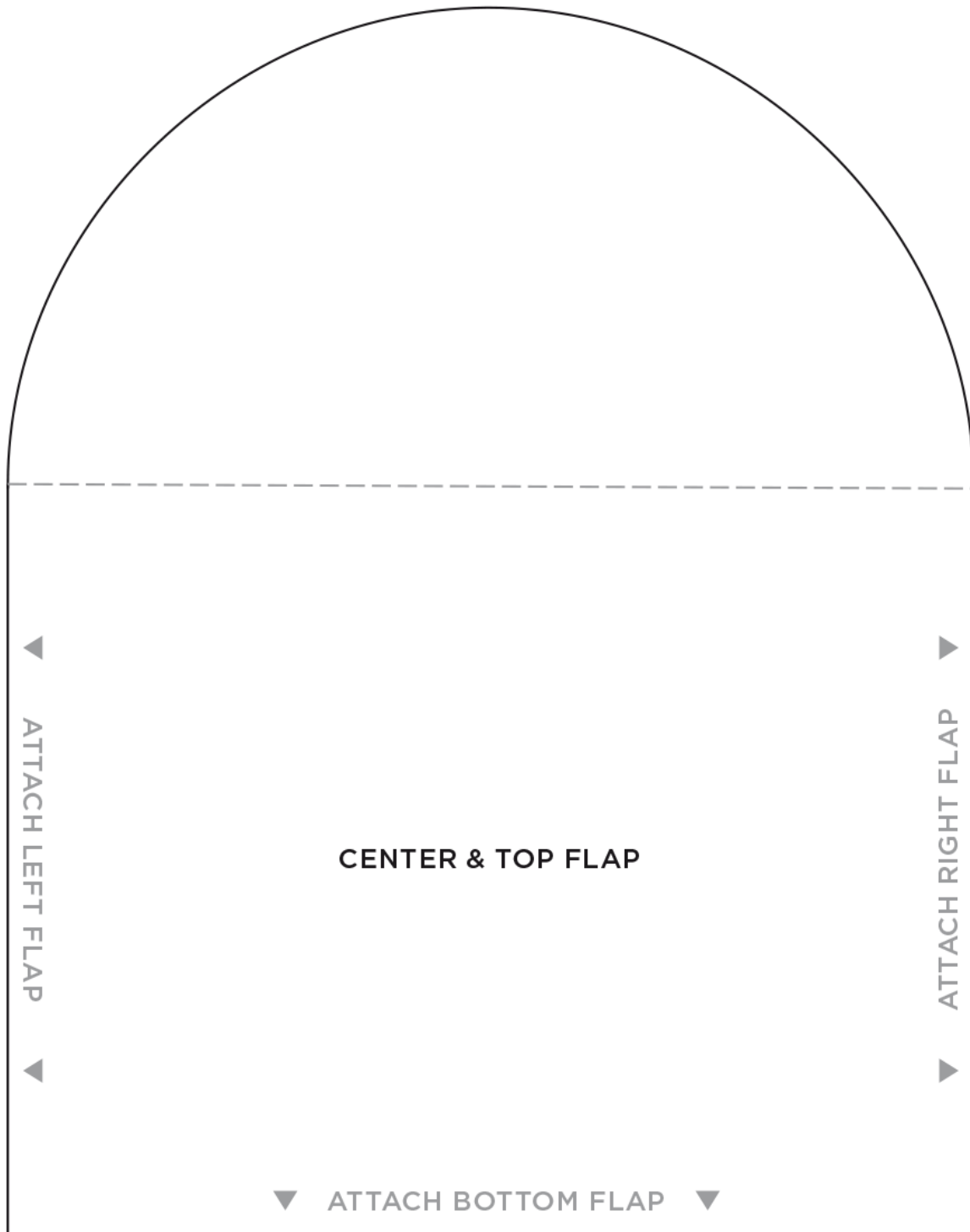
CUSTOM ENVELOPES

MAIL CALL HALF CIRCLE

6" x 4.6" Folded (3 of 4)

Cut: _____

Fold: - - - - -



CUSTOM ENVELOPES

MAIL CALL HALF CIRCLE

6" x 4.6" Folded (4 of 4)

Cut: _____

Fold: - - - - -



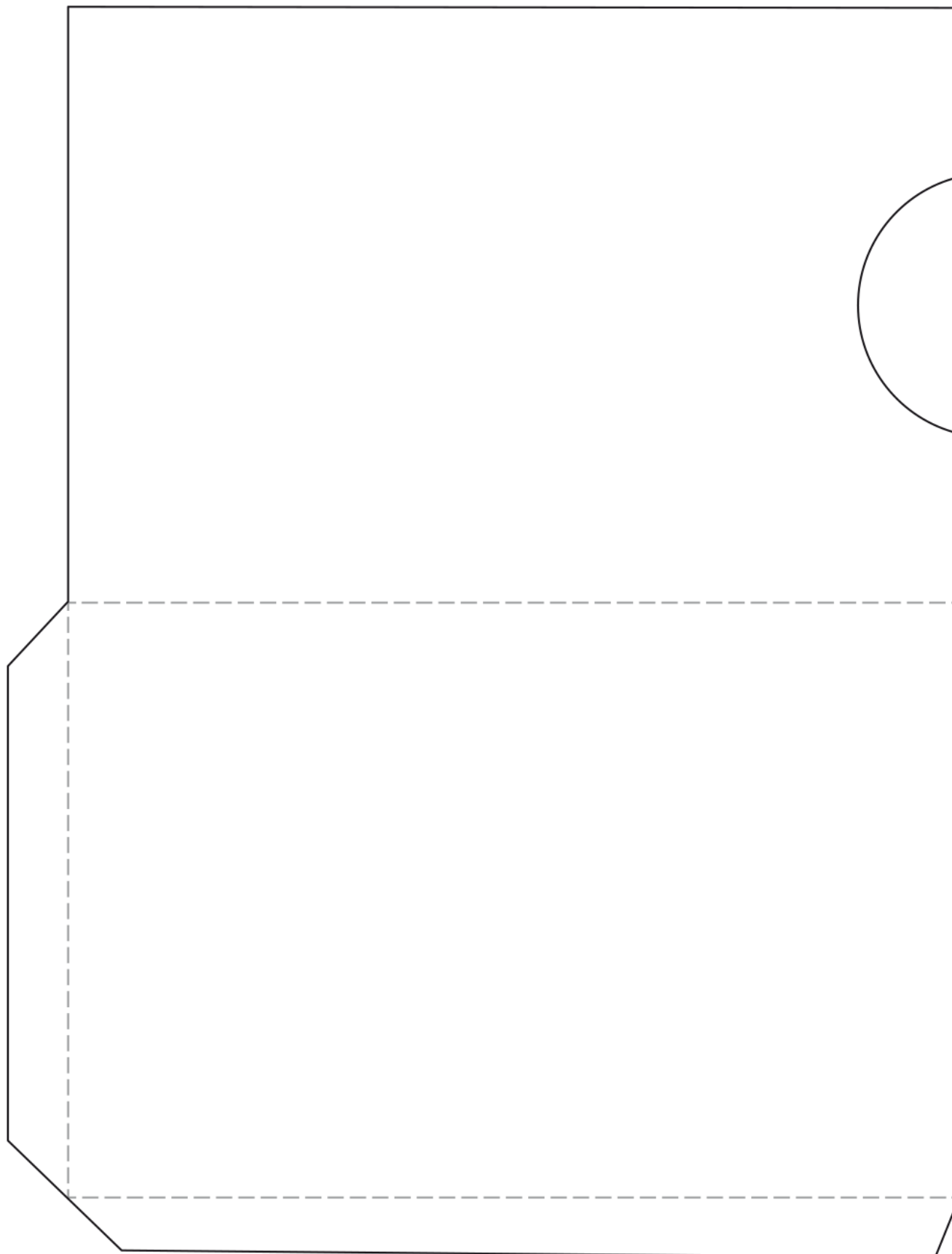
CUSTOM ENVELOPES

MAIL CALL POCKET - 4.25" x 6.375" Folded

SCALED AT 100%

Cut: _____

Fold: - - - - -





◀ PAINT IT SWEET

When you're trying your hand at hand-painted envelopes, opt for craft acrylics. They're fast-drying, so they're a good choice for layering colors.

▼ HERE'S THE SEAL

Vellum tends to crinkle when you fold it, so use extra pressure when you're creating the paper. (This vellum has a floral pattern we traced with a gold marker). After you fold it, add a cardstock lining.

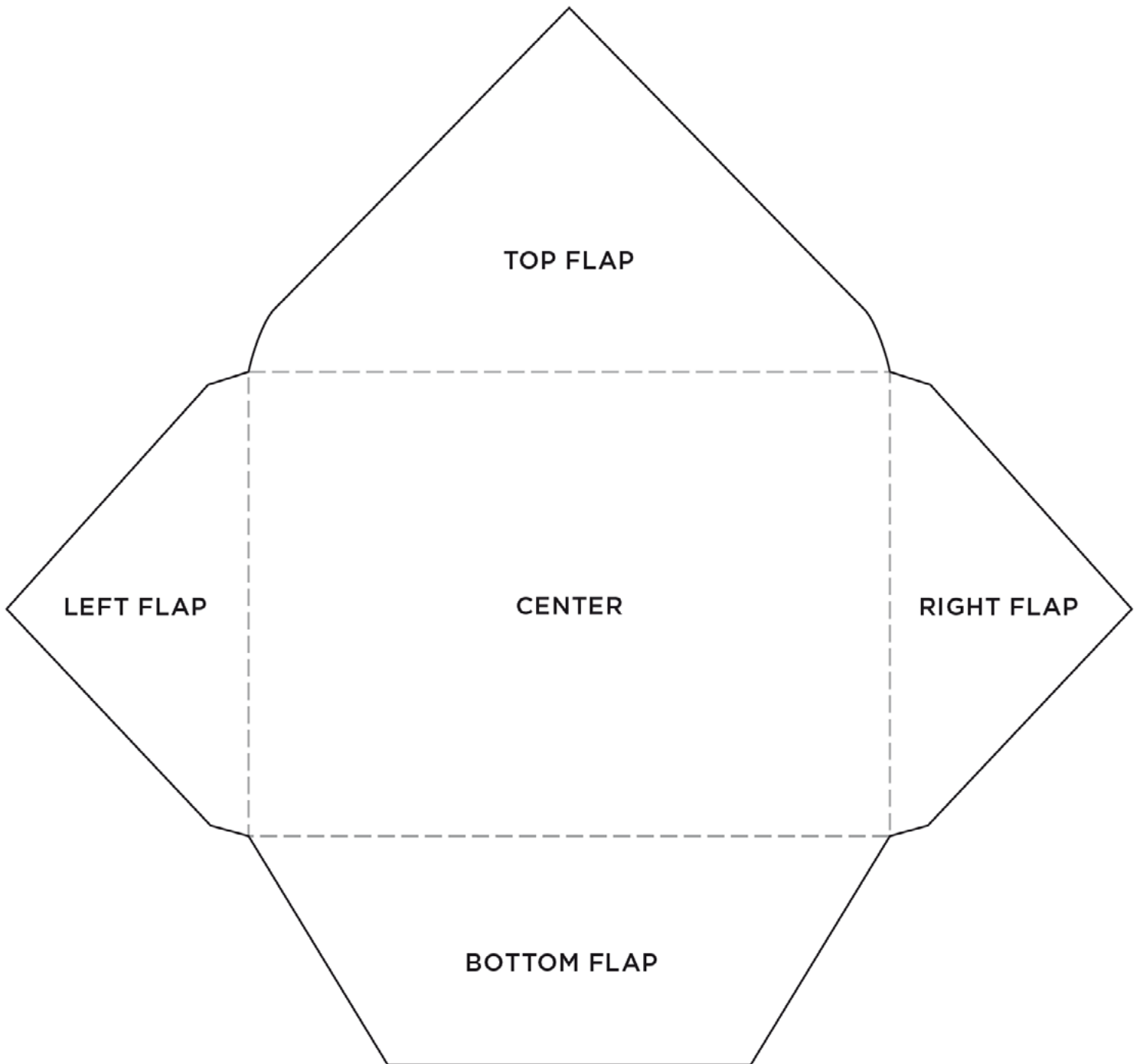


CUSTOM ENVELOPES

PAINT IT SWEET - 5.25" X 7.25" Folded (1 of 3)

SCALED AT 60%

See 2-3 for full-size template

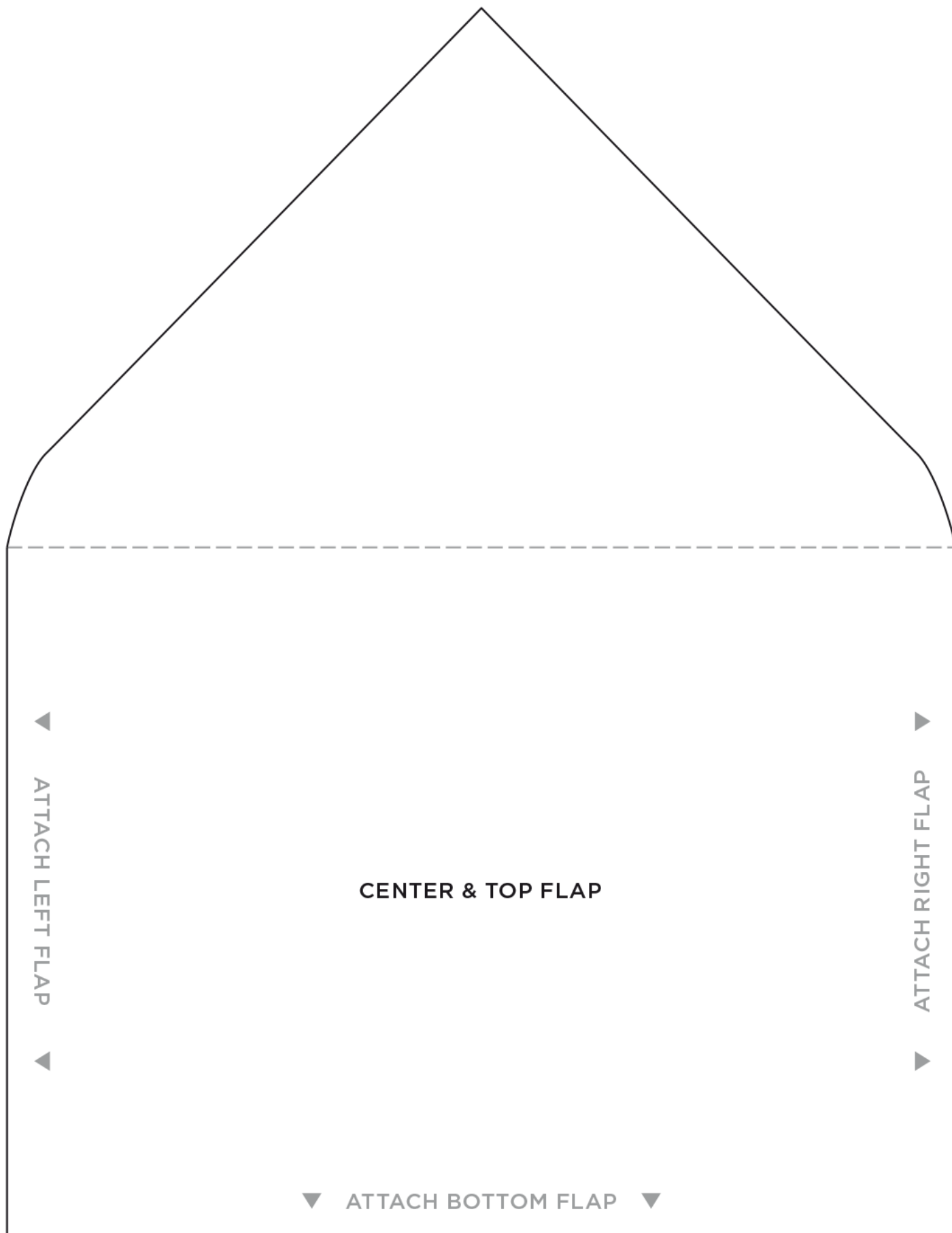


CUSTOM ENVELOPES

PAINT IT SWEET - 5.25" X 7.25" Folded (2 of 3)

Cut: _____

Fold: - - - - -

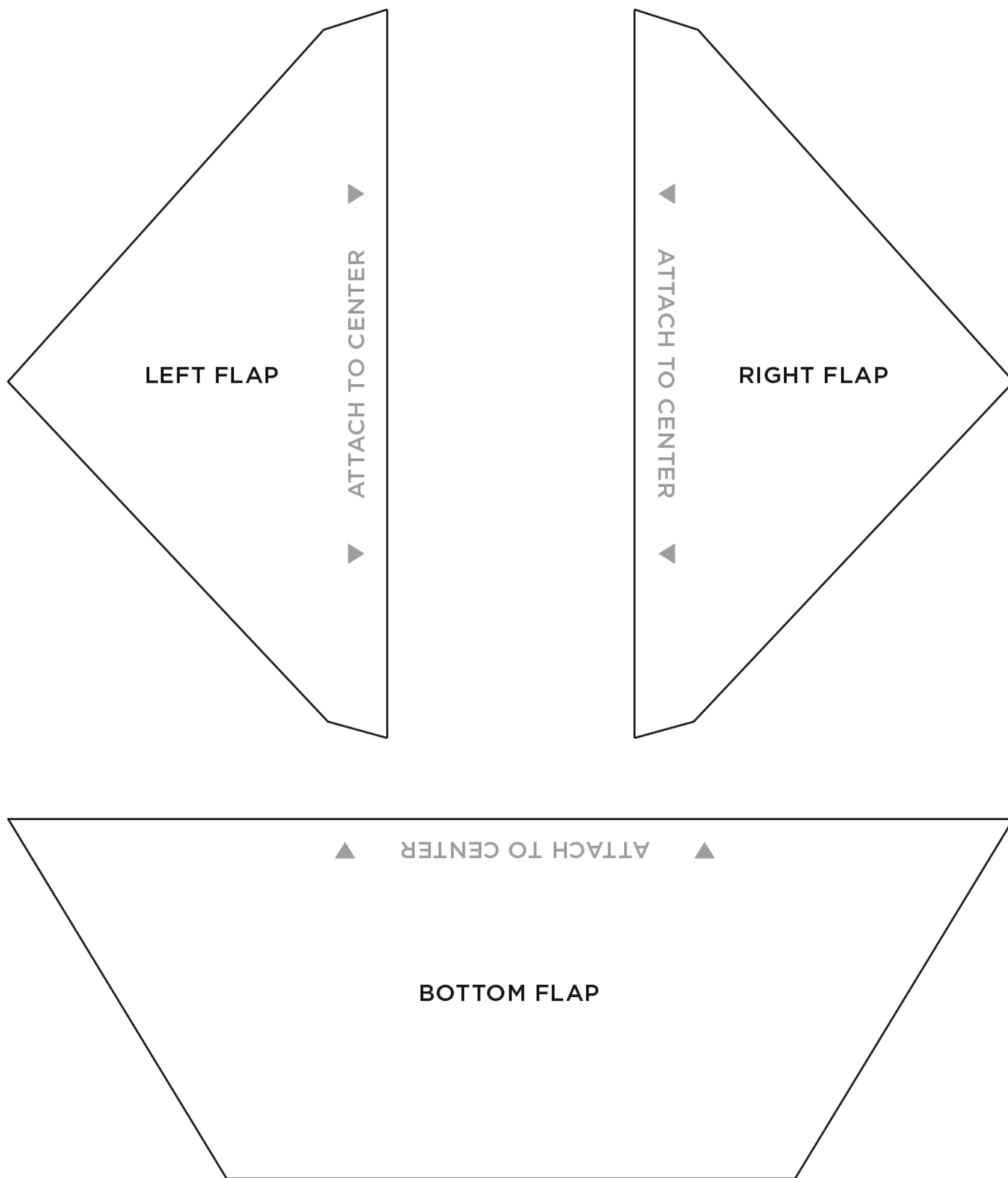


CUSTOM ENVELOPES

PAINT IT SWEET - 5.25" X 7.25" Folded (3 of 3)

Cut: _____

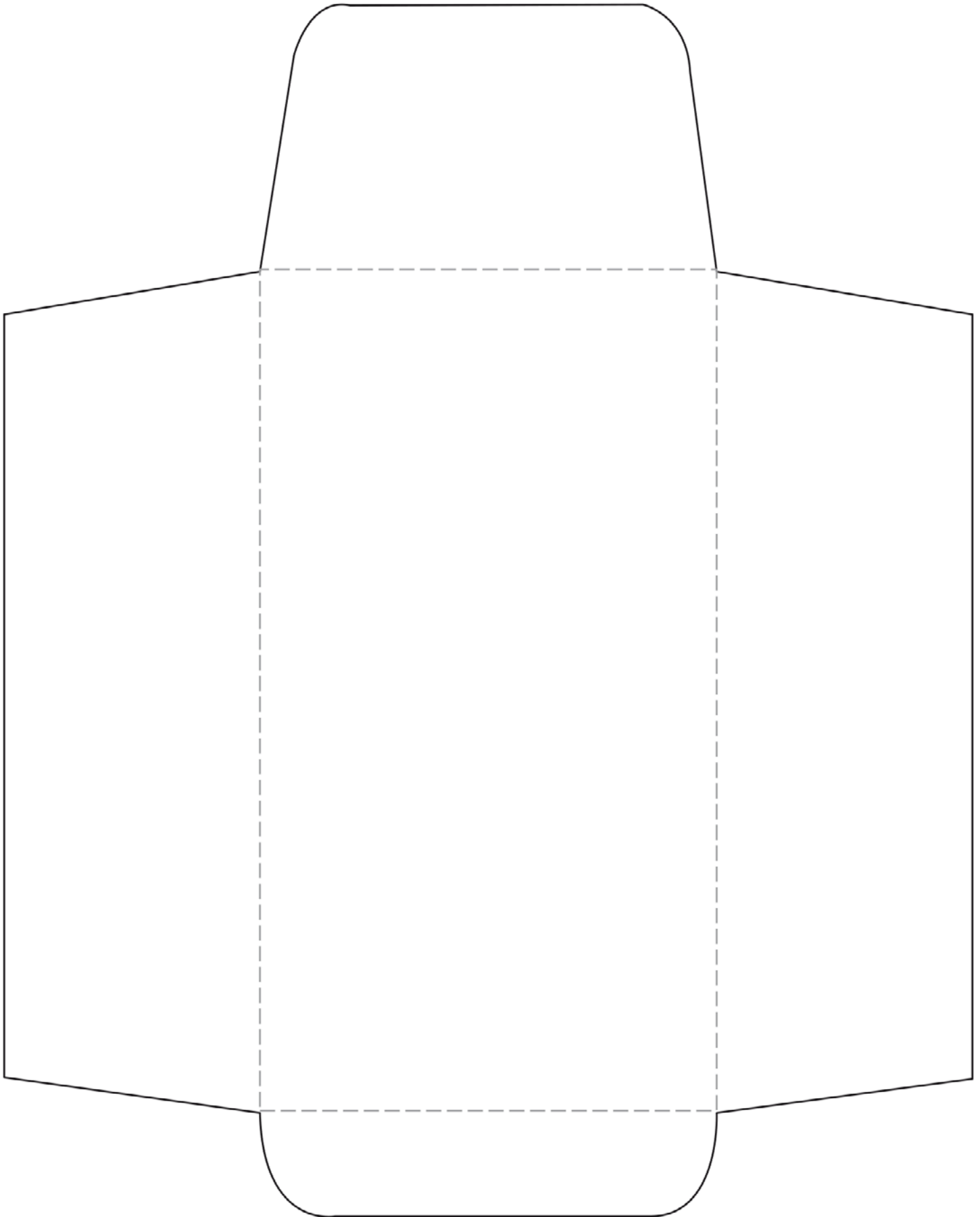
Fold: - - - - -



CUSTOM ENVELOPE

HERE'S THE SEAL - 6.5" x 3.5" Folded

SCALED AT 100%





FIT TO BE TIED

Here's how to make an adorable tied envelope! Cut, fold and adhere scrapbook paper (ours is from the sugar-coated paper pack) according to the template. Then back two metal brads with paper circles, cut holes in the envelope to attach them—and it's ready to tie!



STAMP & DELIVER

We combined freehand drawing, calligraphy and clear stamps to create the look of these two envelopes. We inked "Olivia's" with flower and insect stamps, then finished by coloring with pencils. And we painted "Alaina's" with chalk ink using sponge-tip applicators.



ENVELOPE MINIS

The best things come in small packages. And that's certainly true when it comes to these mini envelopes! They're perfect for gift cards and little notes.

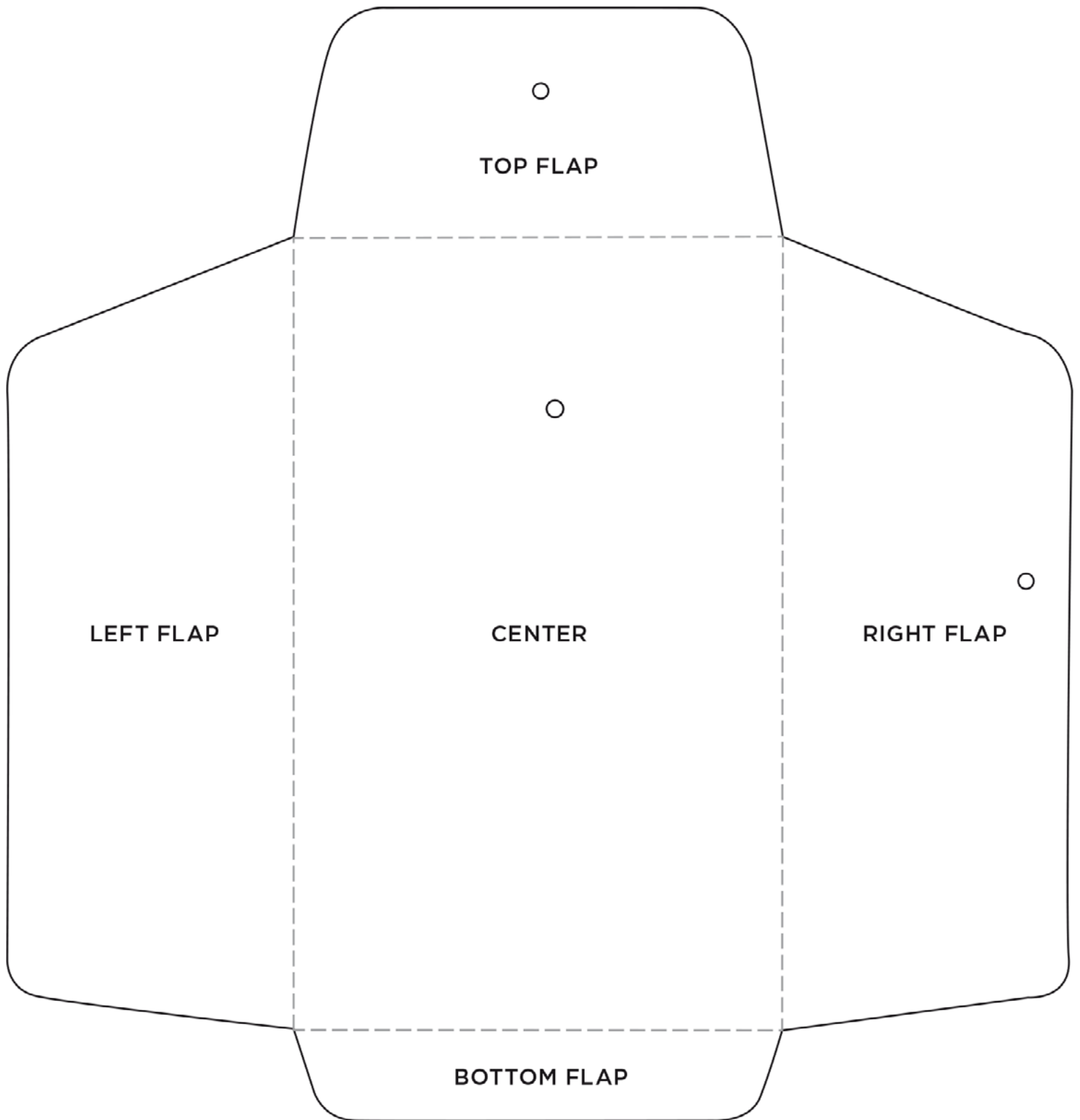
Bonus: You can glue on floral embellishments and paper tags and secure them with jute.

CUSTOM ENVELOPE

FIT TO BE TIED - 6.2" x 3.8" Folded (1 of 3)

SCALED AT 75%

See 2-3 for full-size template

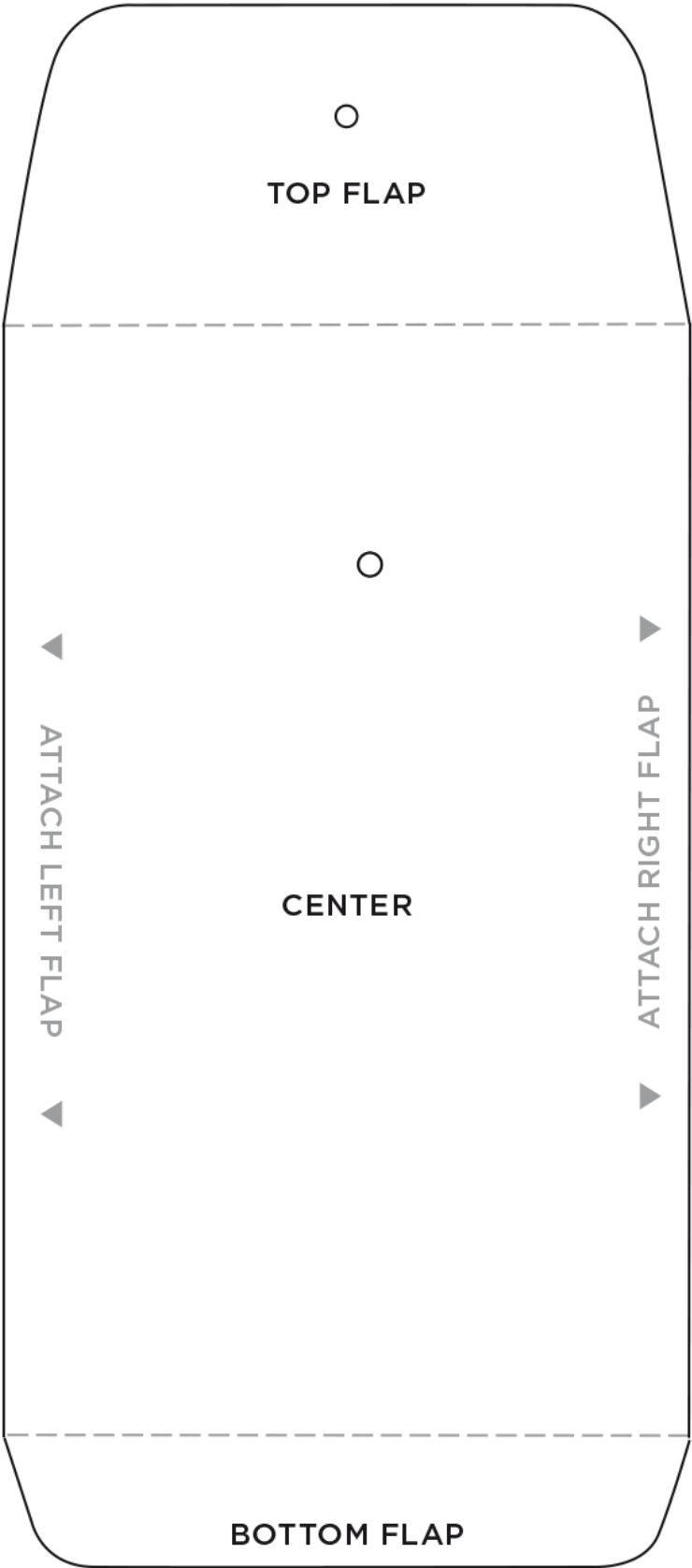


CUSTOM ENVELOPE

FIT TO BE TIED - 6.2" x 3.8" Folded (2 of 3)

Cut: _____

Fold: - - - - -



CUSTOM ENVELOPE

FIT TO BE TIED - 6.2" x 3.8" Folded (3 of 3)

Cut: _____

Fold: - - - - -

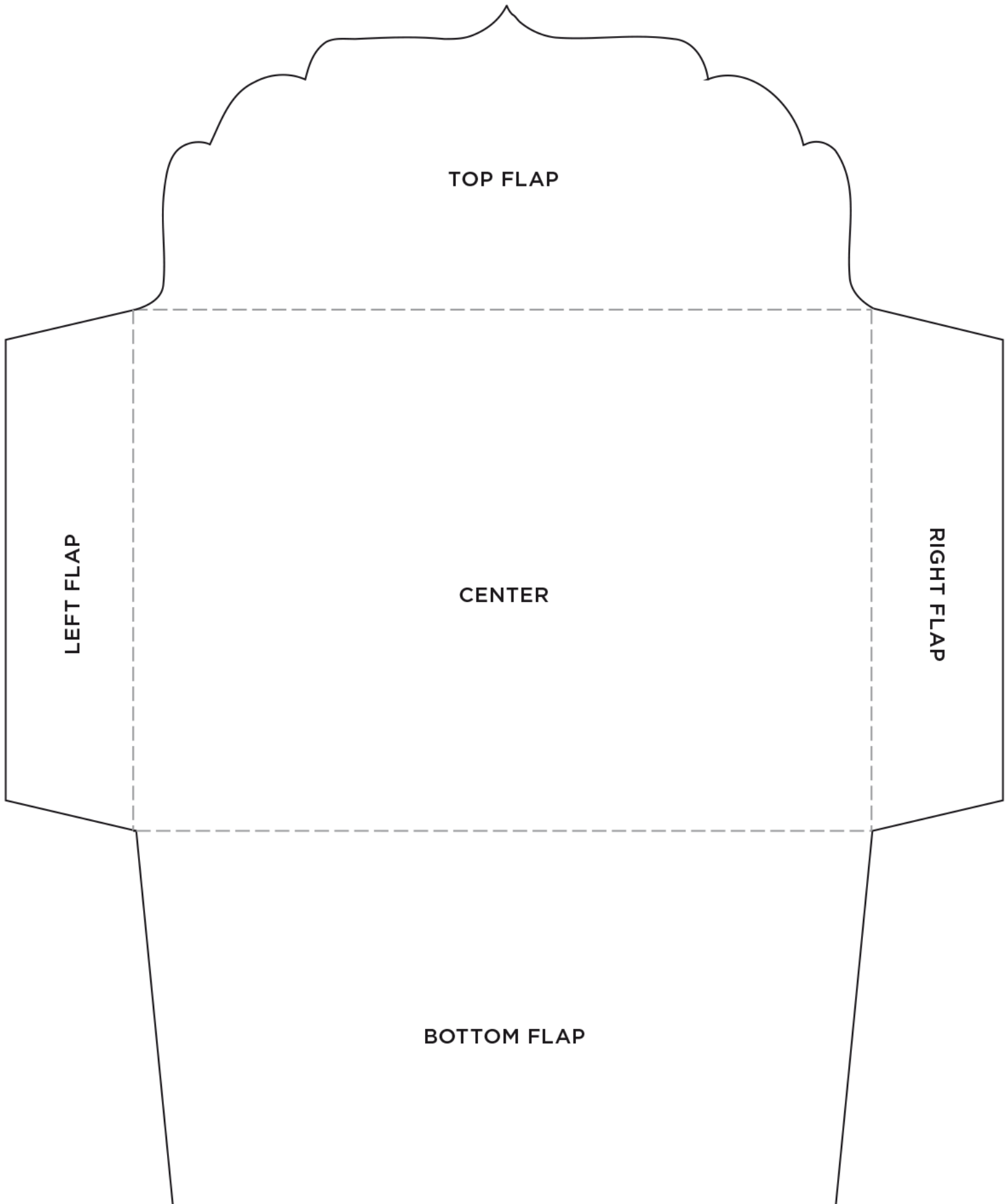


CUSTOM ENVELOPE

STAMP AND DELIVER - 5" x 7" Folded (1 of 3)

SCALED AT 75%

See 2-3 for full-size template

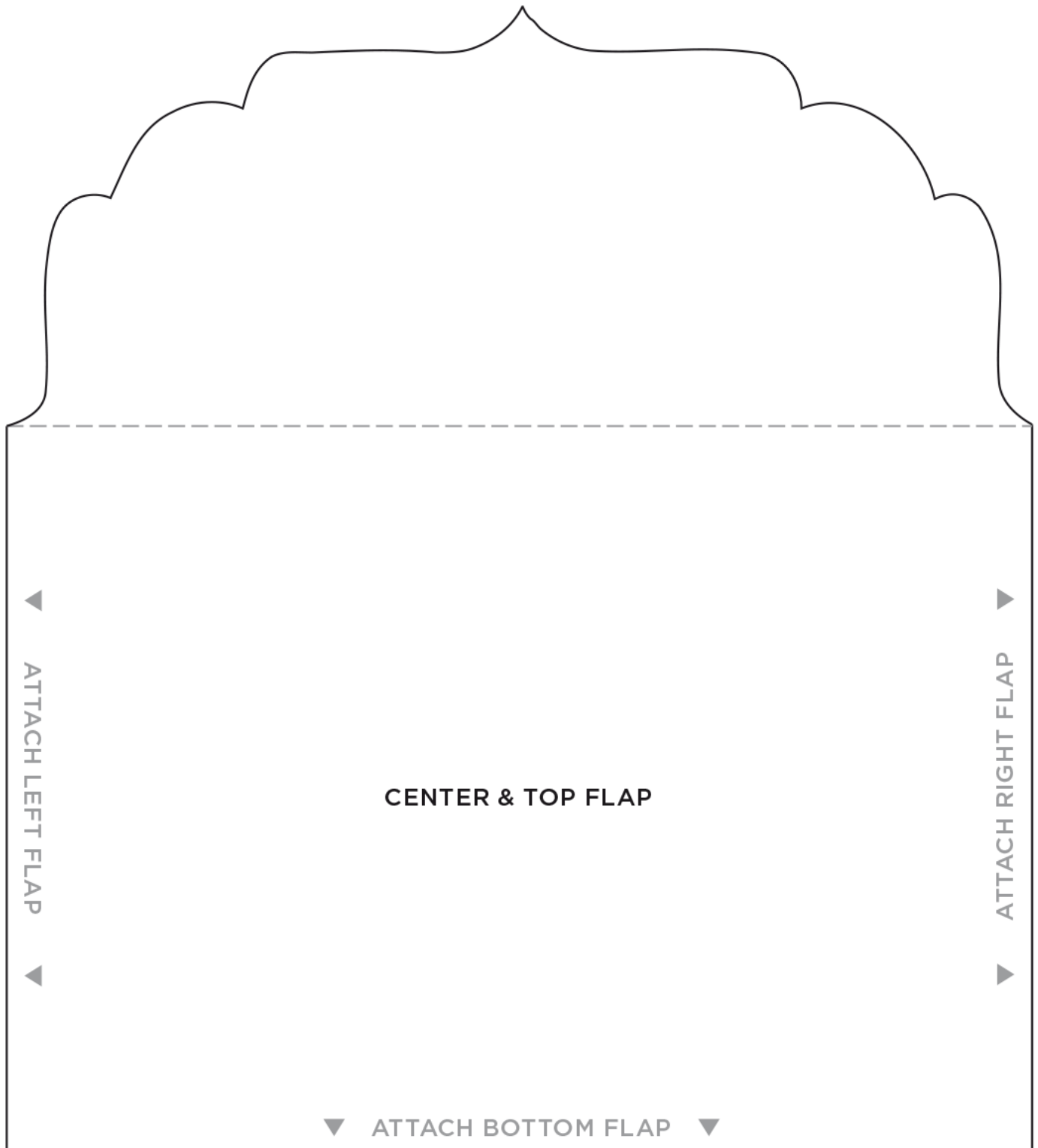


CUSTOM ENVELOPE

STAMP AND DELIVER - 5" x 7" Folded (2 of 3)

Cut: _____

Fold: - - - - -



CUSTOM ENVELOPE

STAMP AND DELIVER - 5" x 7" Folded (3 of 3)

Cut: _____

Fold: - - - - -



CUSTOM ENVELOPES

ENVELOPE MINIS - 2.75" x 5.5" Folded (1 of 2)

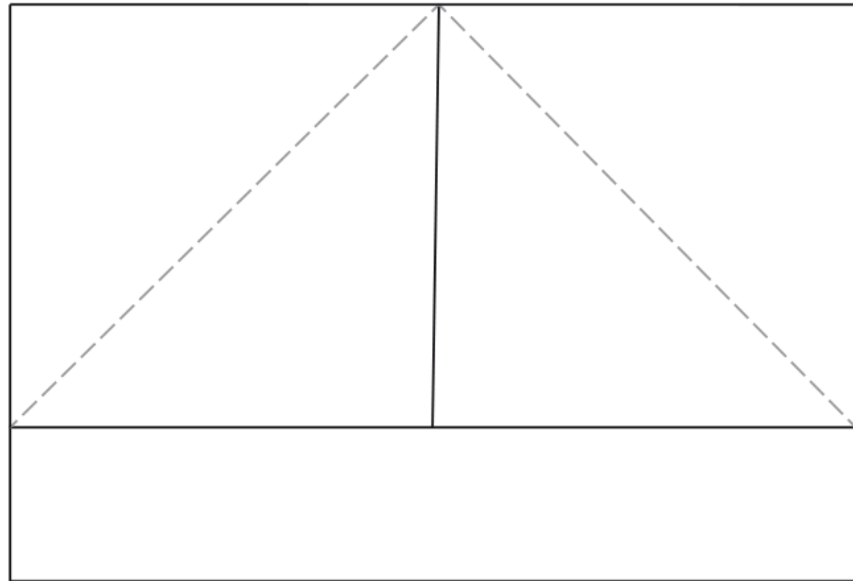
SCALED AT 40%

Cut: _____

Fold: - - - - -

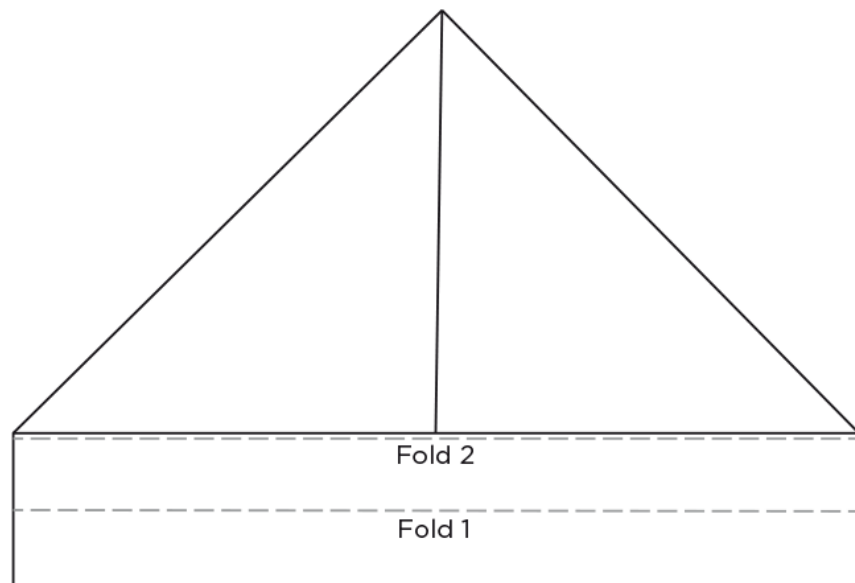
STEP 1:

- Cut 11" x 7 1/2" rectangle from cardstock.
 - Evenly fold in corners of one long side.
- Note: Corners should meet as shown.*



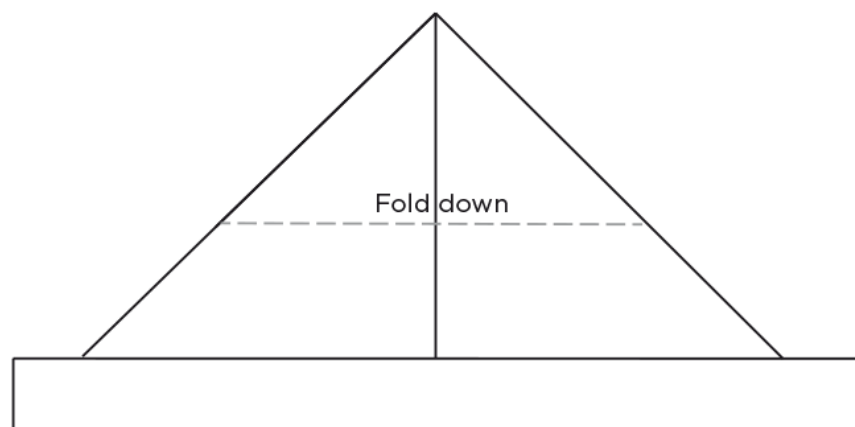
STEP 2

- Fold bottom 1" upwards (where folded corners meet), and then fold 1" upwards again.



STEP 3:

- Fold top point down 2 3/4".
- Note: Top point should touch center of bottom edge.*



CUSTOM ENVELOPES

ENVELOPE MINIS- 2.75" x 5.5" Folded (2 of 2)

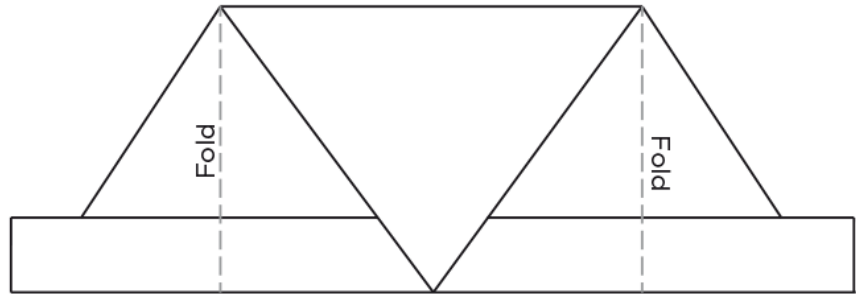
SCALED AT 40%

Cut: _____

Fold: - - - - -

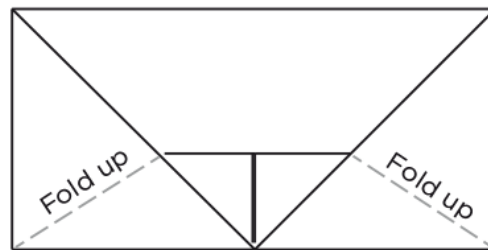
STEP 4

- Evenly fold sides inward so that they meet.



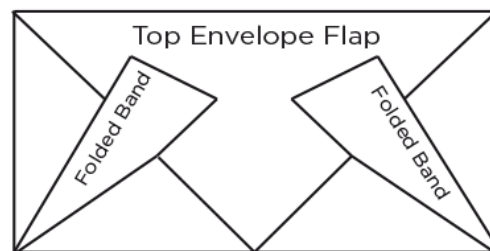
STEP 5

- Fold up bottom corners of side flaps as shown.

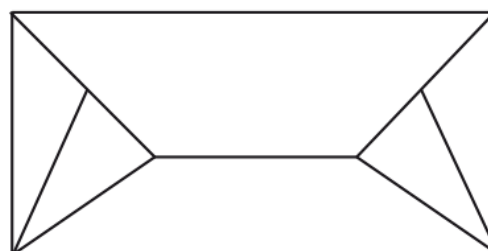


STEP 6

- Tuck folded bands behind top envelope flap.
- Tuck top envelope flap into bottom band.



Finished



MAIL BLOOM

You can make this envelope-shaped card with two pieces of kraft cardstock. Fold the front piece to form an open pocket for embellishments like florals and greenery. And glue the back flap along the fold of the card.



SIGNED, SEALED, DELIVERED

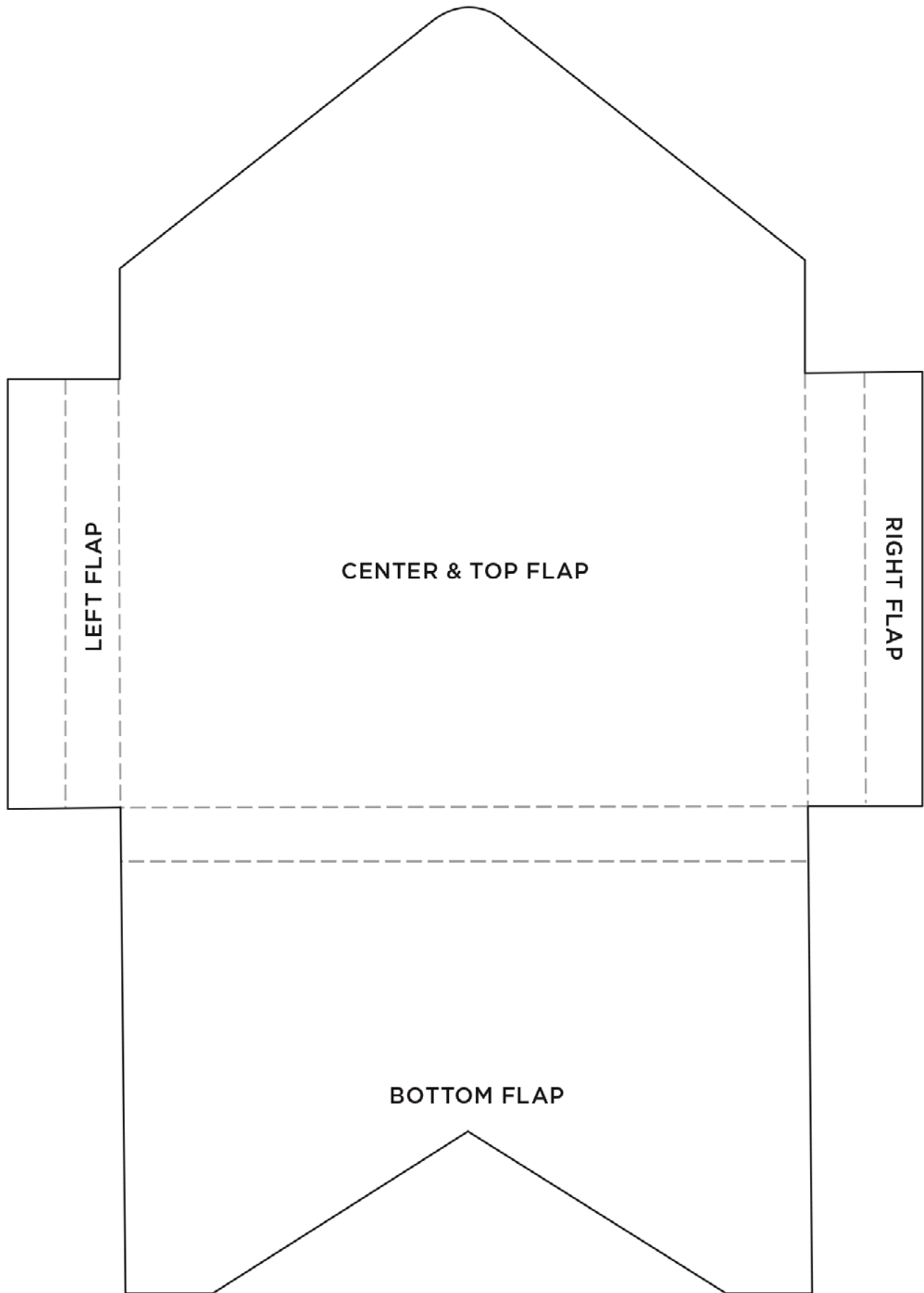
If you're making envelopes to give out in person and you want to go the extra mile, try cutting out cute postage stamps. You can snip these handmade stamps from the macaron cardstock pack, which comes with five different colors.

CUSTOM ENVELOPE

MAIL BLOOM - 7" x 8" Folded (1 of 3)

SCALED AT 75%

See 2-3 for full-size template

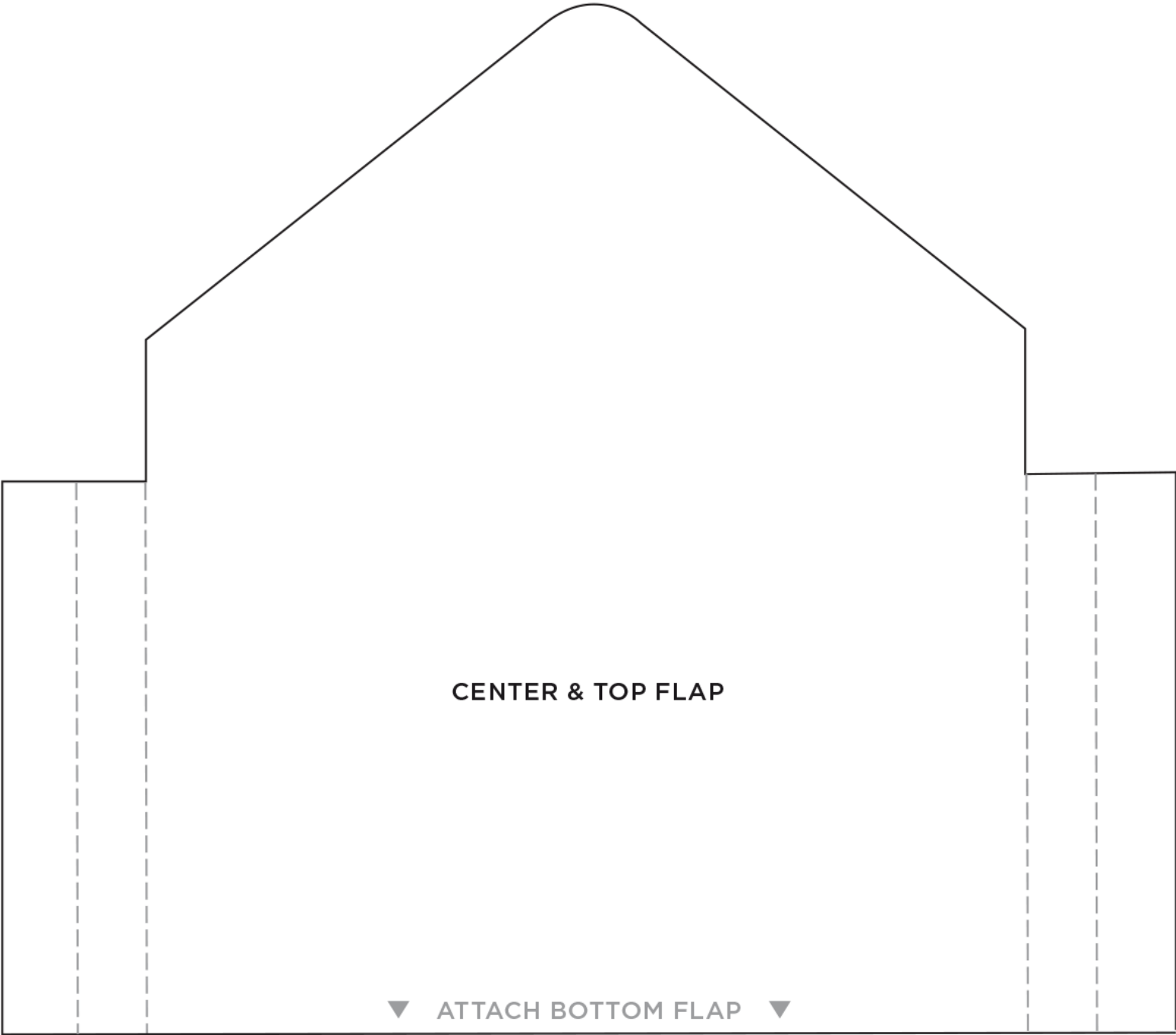


CUSTOM ENVELOPE

MAIL BLOOM - 7" x 8" Folded (2 of 3)

Cut: _____

Fold: - - - - -



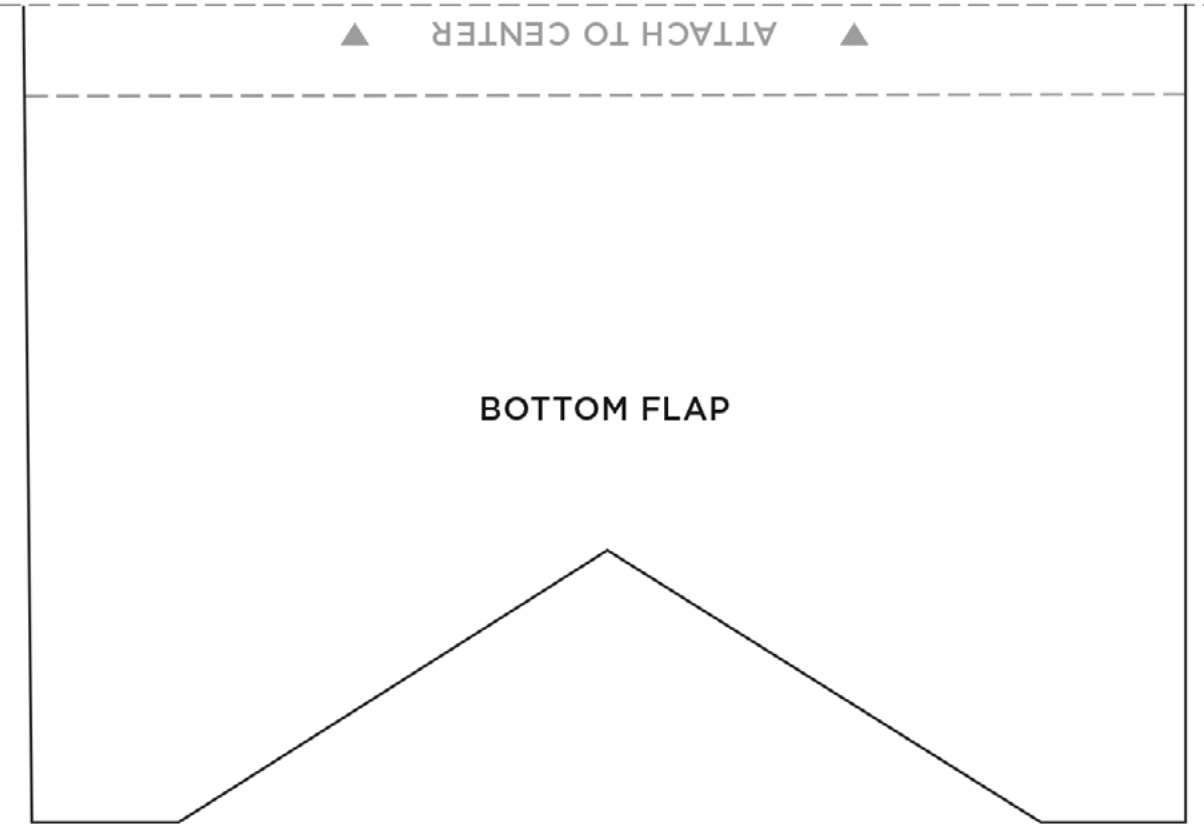
CUSTOM ENVELOPE

MAIL BLOOM - 7" x 8" Folded (3 of 3)

Cut: _____

Fold: - - - - -

Align arrow end and tape template together



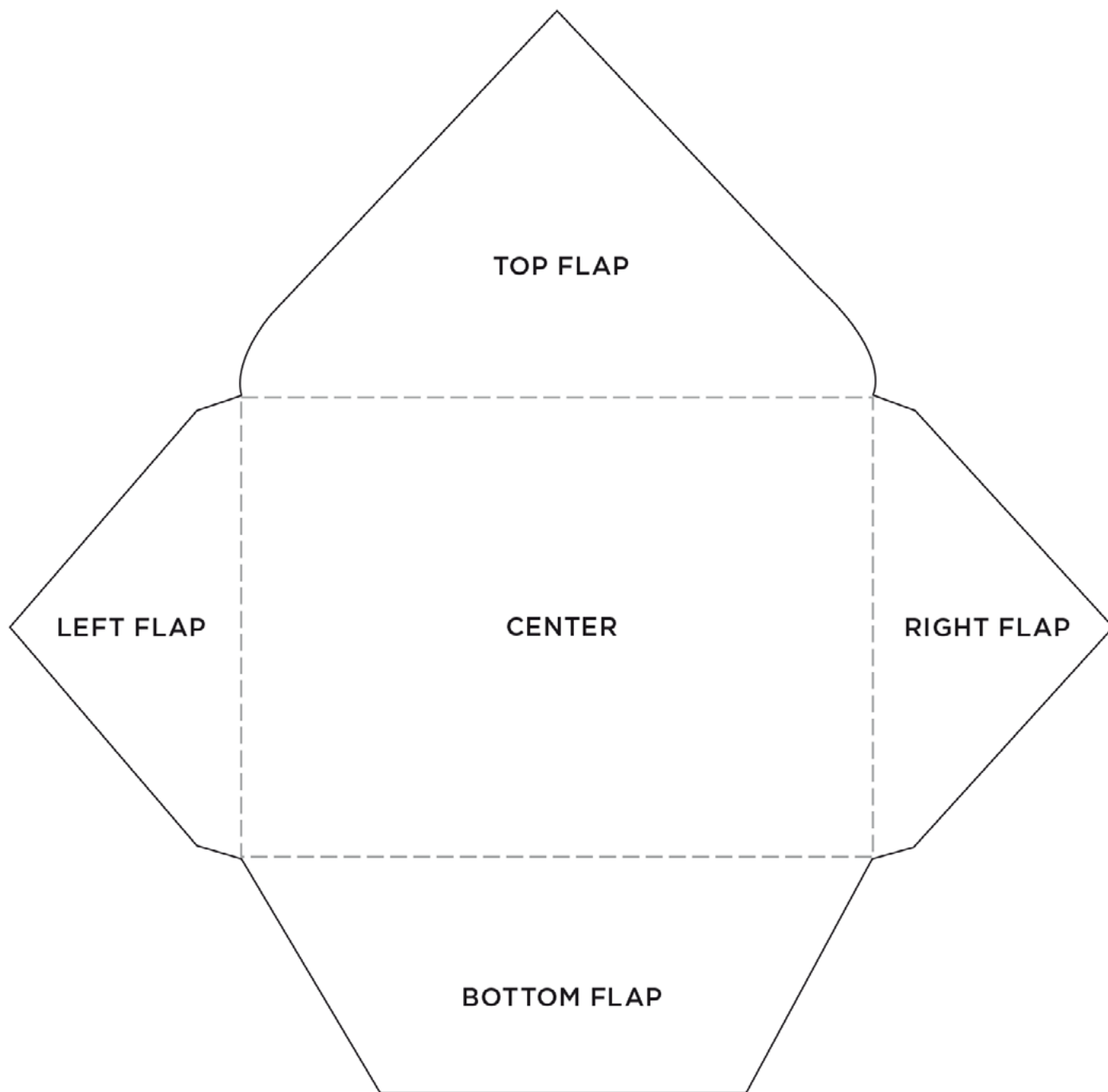
CUSTOM ENVELOPES

SIGNED, SEALED, DELIVERED

4" X 5.5" Folded (1 of 3)

SCALED AT 75%

See 2-3 for full-size template



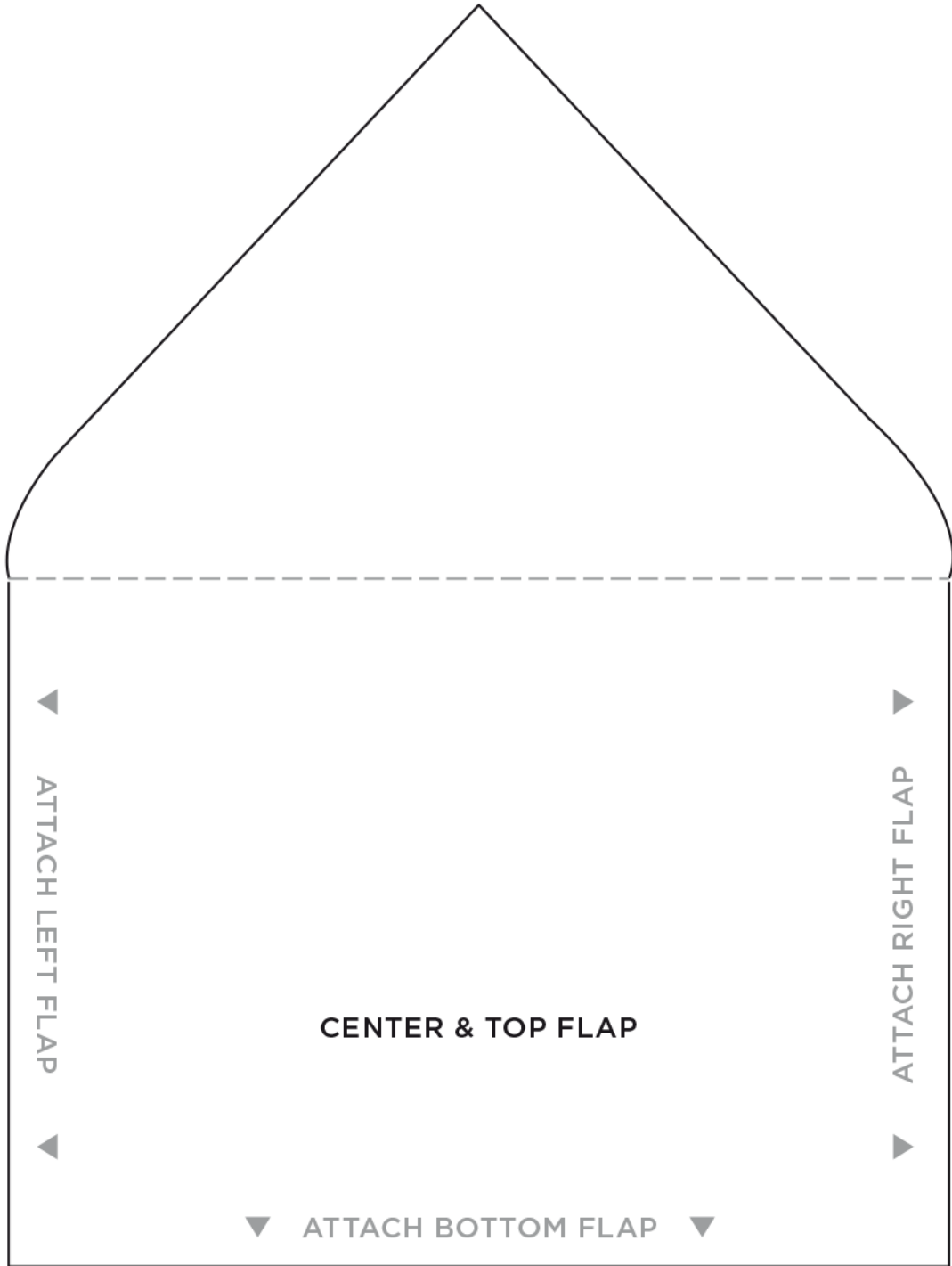
CUSTOM ENVELOPES

SIGNED, SEALED, DELIVERED

4" X 5.5" Folded (2 of 3)

Cut: _____

Fold: - - - - -



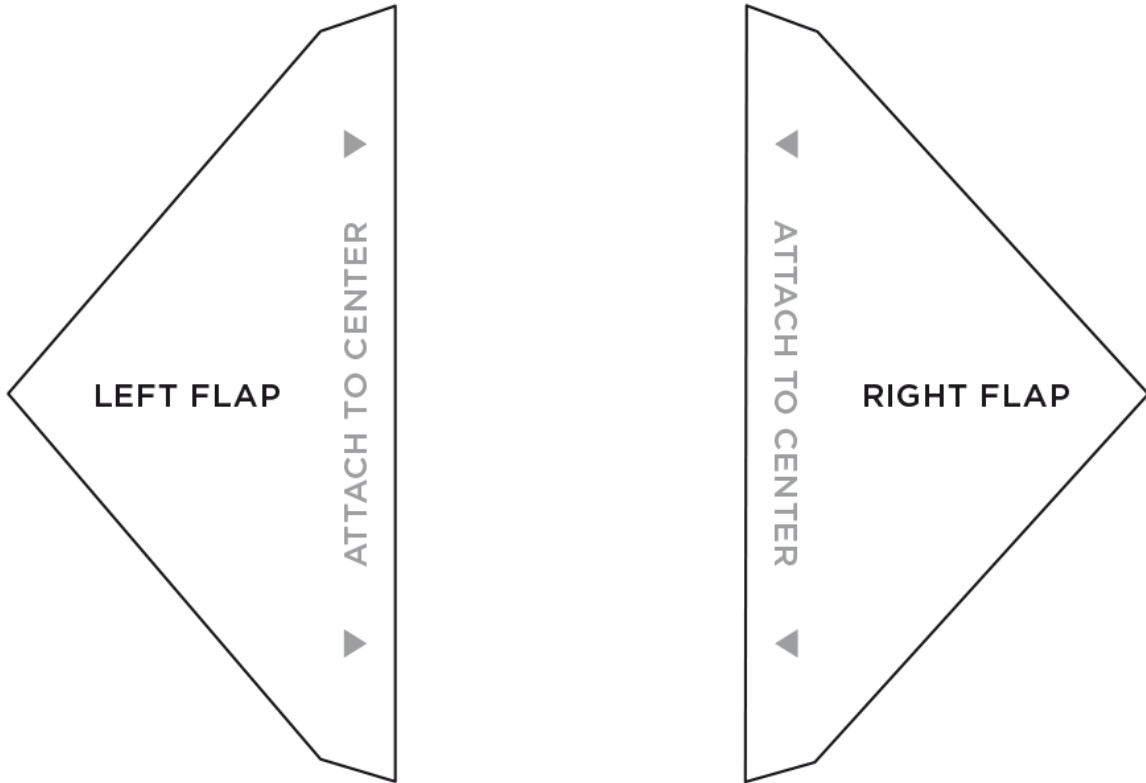
CUSTOM ENVELOPES

SIGNED, SEALED, DELIVERED

4" X 5.5" Folded (3 of 3)

Cut: _____

Fold: - - - - -



HOW TO MAKE AN ENVELOPE



SUPPLIES:

- Cardstock
- Scrapbook paper
- Ruler
- Scissors
- Craft knife
- Adhesive runner

1



Following template, cut cardstock for outer envelope and scrapbook paper for liner.

2



Fold as indicated on template.

3



Glue lining to outer envelope.

4



Glue sides to bottom flap.

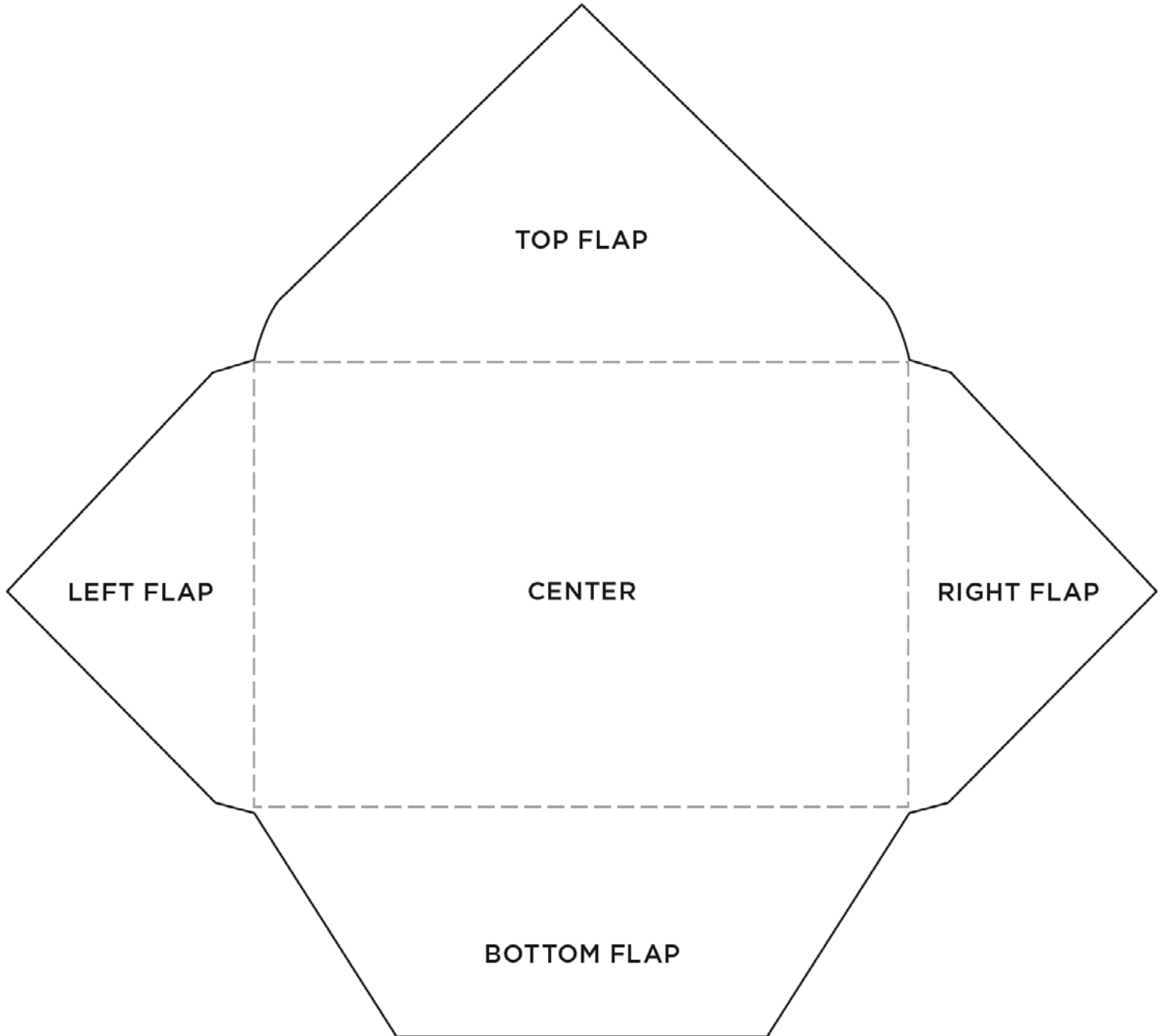
CUSTOM ENVELOPES

HOW TO MAKE AN ENVELOPE

4.25" X 6.25" Folded (1 of 4)

SCALED AT 70%

See 2-4 for full-size envelope
and liner template



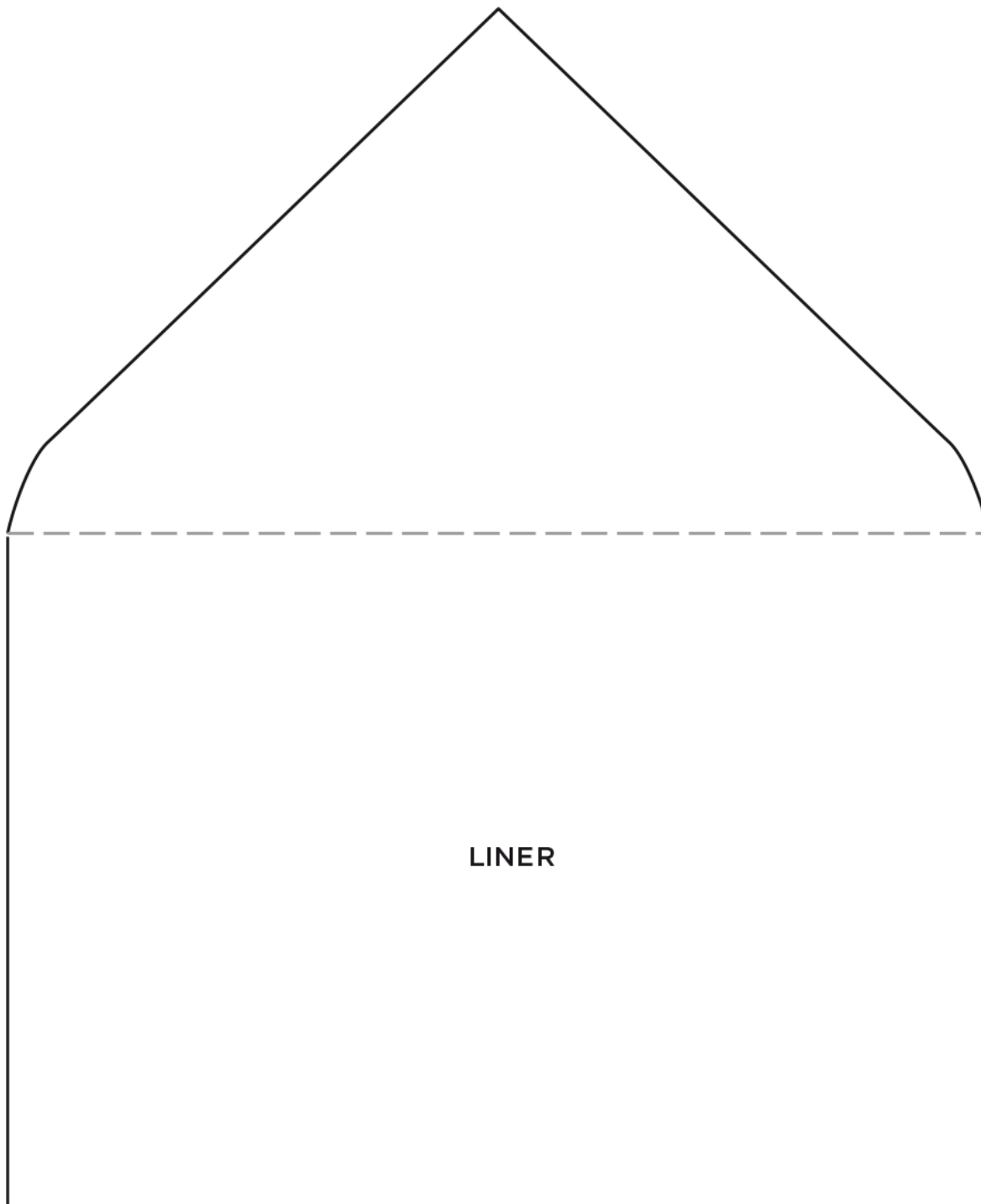
CUSTOM ENVELOPES

HOW TO MAKE AN ENVELOPE

4.25" X 6.25" Folded (2 of 4)

Cut: _____

Fold: - - - - -



CUSTOM ENVELOPES

HOW TO MAKE AN ENVELOPE

4.25" X 6.25" Folded (4 of 4)

Cut: _____

Fold: - - - - -

